



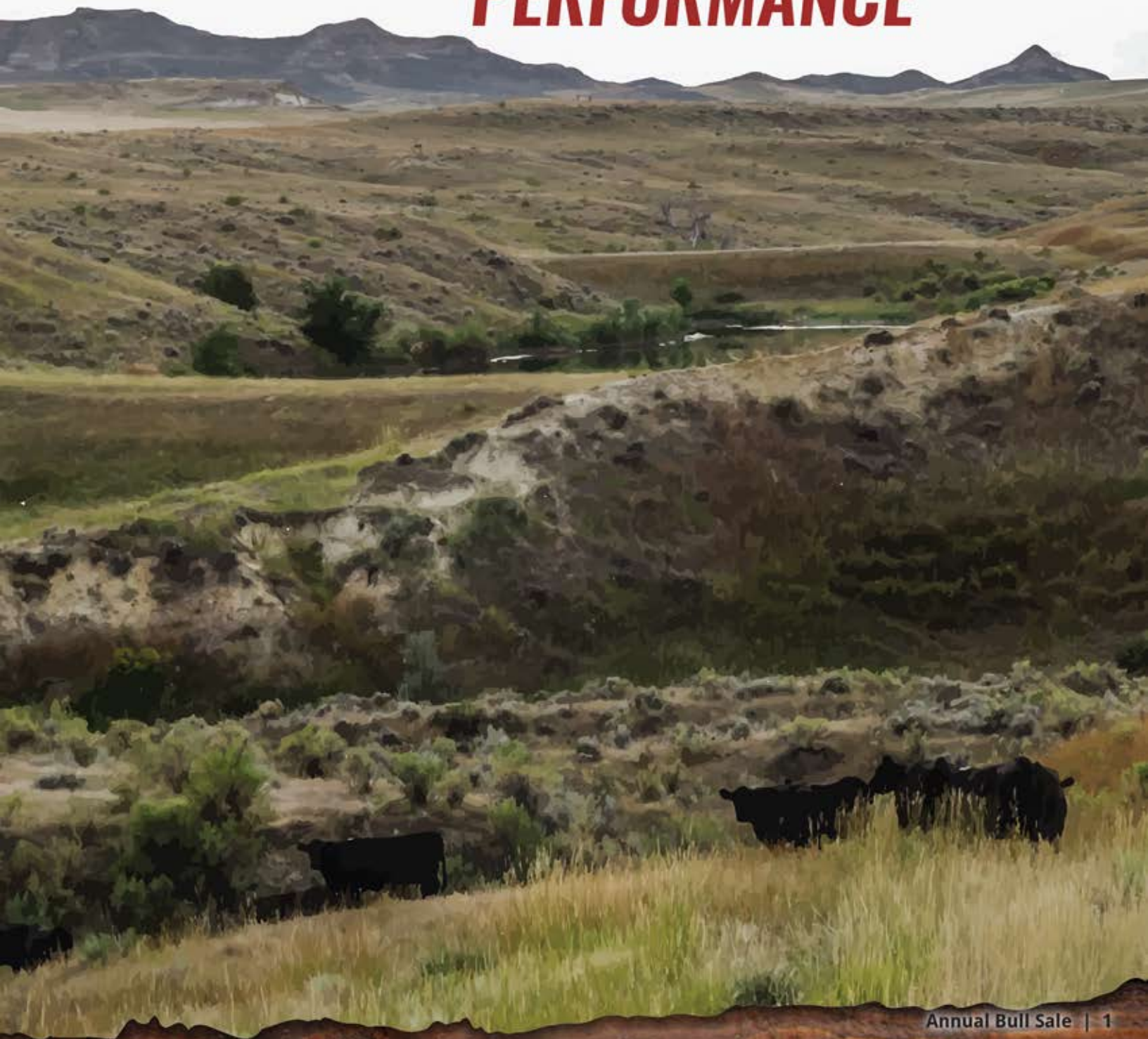
RAFTER T ANGUS

ANNUAL BULL SALE

JANUARY 9, 2021 | 1:00 PM | BUFFALO, WY



TRUST
the brand built on
**PROVEN COW FAMILIES &
PERFORMANCE**



RAFTER T ANGUS

ANNUAL BULL SALE

JANUARY 9, 2021 | 1:00 PM | BUFFALO, WY
BUFFALO LIVESTOCK AUCTION



SALE DAY CONTACTS

Sale Barn 307-684-0789
Kale's cell 307-299-4569
Kim's cell 307-257-4262

SALE DAY REPRESENTATIVES

Kurt Kangas 406-366-4190
American Angus Association
Curt Cox 307-630-4604
Wyoming Livestock Roundup
Andy Rest 406-670-5678
Cattle Business Weekly
Matt Wznick 406-489-2414
Tri-State Livestock News
JT Guest 307-534-5823
Special Assignment

AUCTIONEER

Kyle Shobe 406-366-0472

ABSENTEE BIDDING

Todd Daniels 406-426-8090
Bill Pelton 406-671-5100

Live internet bidding is available through CattleUSA.com or you may contact Kim and Kale Krestchman, the auctioneer or sale representatives prior to the sale.

TERMS AND CONDITIONS

Cattle will sell under the Standard Terms and Conditions as recommended by the American Angus Association.

RETAINED INTEREST

Rafter T Angus will be retaining a one-third revenue sharing interest in every bull selling in the sale. Full possession and salvage value sells on all bulls.

SUPPLEMENTAL INFORMATION

A supplement data sheet will be available sale day with scrotal measurements, ultrasound data and other updates. Announcements from the auction block take precedence over catalog information.

SALE LOCATION

Buffalo Livestock Auction
44 T W Rd
Buffalo, WY 82834

SALE DAY SCHEDULE

9:00 AM Bulls on Display
11:30 AM Free Lunch
1:00 PM Sale Begins

LIABILITY

All persons who attend the sale do so at their own risk. Rafter T Angus and Buffalo Livestock Auction assumes no liability, legal or otherwise, for any accidents which may occur.

ACCOMMODATIONS

Hampton Inn, Buffalo 307-684-8899
Comfort Inn, Buffalo 307-684-9564

TRUCKING

Delivery of all bulls is free of charge in Wyoming and adjoining states. Delivery of bulls will begin mid-March 2021.

INSURANCE

Bill Pelton, Stockmens Ins. Agency 406-671-5100
We strongly encourage our buyers to purchase insurance on their bulls against death or injury. We cannot guarantee them against an act of God or sickness that develops while he is in your control. We do guarantee our cattle to be healthy sale day and when their arrive to your ranch. We recommend Bill Pelton, but he will not be available sale day, you may contact him at your convenience and set-up a policy per your request.

WINTERING

All bulls will be wintered free of charge until April 1, 2020 at our ranch in Gillette, WY. If you choose to leave your bulls past April 1st feeding arrangements can be made at the buyer's expense.

HERD HEALTH

All cattle sell with proper health papers for interstate shipment. A rigid herd health program is followed. All cattle have been calf hood vaccinated with 7-way Somnus at branding and at weaning along with IBR, BVD, BRSV, Pasturella and a Dectomax Pour On.

FERTILITY

The bulls will be fertility tested by a licensed veterinarians, Drs. Jay and Brandi Hudson, prior to delivery.

FIRST BREEDING SEASON GUARANTEE

Rafter T Angus guarantees bull(s) which sell for \$3,000 or more for their first breeding season (60 days from turn out) provided the bull(s) are managed properly and are kept in acceptable nutritional and physical health. Upon delivery Rafter T Angus guarantees the bull(s) are sound and fertile. Should death or injury occur to the bull(s) it should be documented and verified by a licensed DVM. Rafter T Angus will either give credit to the buyer or replace injured bull(s) at their discretion, if a comparable bull(s) is available.

SIGHT UNSEEN GUARANTEE

We guarantee all bulls purchased sight unseen. If you don't like the bull at the time of delivery, we'll take him home.

CALVING EASE RECOMMENDATION

Throughout the catalog we have selected bulls we feel are definite calving ease and should be considered to use on heifers. These notes can be found in the footnote section of the lot boxes. This suggestion is based on a number of factors including pedigree, birth weight and our knowledge of the sire and dam. All buyers should take into account their own program when considering these recommendations. Please talk to us prior to the sale if you have any questions.

Greetings Cattlemen!

Please consider this a personal invitation to our 5th annual bull sale. Five years already! We have had the privilege of meeting and doing business with some of the most amazing ranchers in the last five years. Customers, who we now are very proud to call friends. A deep and heartfelt thank you for helping us get started in this business.

Every part of our lives has been impacted by the events of the past year. The only constant has been our cows. In spite of the widespread drought and political uncertainties of the last year, the cows still need us to show up. Every Day! This last year has been a perfect example of the the integrity and fortitude of all farmers and ranchers.

Recently cattle producers have seen drastic changes in our industry, especially over the past year. In our area we've endured a horrible drought, forcing us to wean the bulls early. Through this harsh test from Mother Nature grass is becoming scarce for our cows, demanding them to maintain production on a high level of efficiency. Cattle which best survive these elements are problem free, predictable from their genetic makeup and provide complete structural soundness to cover miles of rough terrain. We are fortunate to have a herd of cows handling these situations quite well for their circumstances and we credit their success to our ruthless culling decisions each year in an effort to not pass on unwanted traits/genetics to our customers. We are constantly seeking genetics that will move our herd and breed forward. We feel the best way to achieve this goal is by utilizing a strong AI and Embryo Transfer program. When we individually mate our cows, we are able to highlight their best traits and identify their weaknesses. We strive to produce bulls that offer genetic merit with phenotype.

We are really excited to offer a select group of high elevation bulls this year that are all product of an Embryo Transfer program. These calves all summered with their mothers in the BigHorn Mountains above Buffalo, Wyoming at an elevation of 7,000+ feet.

As calves, these bulls aren't given any special treatment, they are not creep fed. After we wean, the bulls are fed a high fiber pellet along with willow creek wheat hay and wheat silage. We have worked very closely with our nutritionist to develop sound footed, and highly fertile bulls. On this complete ration, the bulls should grow and not get fat. We want to sell you bulls that will be in your herd for years.

We are in the business of customer service. Not only just around sale time but also when the bulls are at home working in your pastures. In an effort to build long term relationships with our customers we are offering our personal guarantee with them. We stand behind every bull that leaves our ranch for one breeding season. If for some reason you are not satisfied with your purchase during the first breeding season, we want to be the first to know. Prior to delivery the bulls will be given a complete breeding soundness exam by Drs. Jay and Brandi Hudson. They will have been carcass ultrasounded and that data will be available prior to the sale. If you live in Wyoming or surrounding states we will deliver your bull(s) for free, beginning mid-March, 2021.

Thanks for taking the time to consider our program. We greatly appreciate your business. If you're in the area before or after the sale please stop by to look at the bulls. The bulls have all been videoed and those videos can be seen on our website. If you have questions about our program or are just needing more information please call us or go to our website www.raftertangus.com.

We can't wait to visit with you on sale day. Please join us for lunch starting at 11:30 AM.





U-2 Coalition 206C

U-2 COALITION 206C

BD: 1/23/15 • AAA#: *18626847 • Tattoo: 206C

SIRE: **HF Syndicate 213Z**
 Connealy Consensus 7229
 HF Miss Blackcap 27R

DAM: **U2 Erelite 109Z**
 Young Dale Xclusive 25X
 U-2 Erelite 1X

Connealy Consensus Blue Lilly of Conanga 16
 TC Freedom 104
 HF Miss Blackcap 50N
 Young Dale Knock Out 134U
 Young Dale Pollyanna 60T
 S A V Final Answer 0035
 U-2 Erelite 8109U

CED	BW	WW	YW	Milk
7	1.1	65	121	18

Sons sell as Lots 1-12, pages 6 through 9.



LD Capitalist 316

LD CAPITALIST 316

BD: 1/26/13 • AAA#: *17666102 • Tattoo: 316

SIRE: **Connealy Capitalist 028**
 S A V Final Answer 0035
 Prides Pita of Conanga 8821

DAM: **LD Dixie Erica 2053**
 C A Future Direction 5321
 LD Dixie Erica Oar 0853

Sitz Traveler 8180
 S A V Emulous 8145
 C R A Bextor 872 5205 608
 Prides Trav of Conanga 6499
 G A R Precision 1680
 C A Miss Power Fix 308
 LD Royce Onaroll 810
 Dixie Erica of R R 8553

CED	BW	WW	YW	Milk
11	-0.5	68	116	28

Sons sell as Lots 13-24, pages 10 through 12.



McConnell Altitude 3114

McCONNELL ALTITUDE 3114

BD: 8/15/13 • AAA#: *17877778 • Tattoo: 3114

SIRE: **Connealy Comrade 1385**
 Connealy Consensus 7229
 Happy Gee of Conanga 919

DAM: **MA Beauty 0156**
 S A V 004 Density 4336
 M A Lucys Traveler 9859

Connealy Consensus Blue Lilly of Conanga 16
 G A R New Design 5050
 Hap Gina of Conanga 260 4965
 S A V 8180 Traveler 004
 S A V May 7238
 V D A R Traveler 722
 R M A Lucys Start 700

CED	BW	WW	YW	Milk
9	-0.9	58	103	20

Sons sell as Lots 25-32, pages 13 through 15.



Ellingson Homegrown 6035

Ellingson HOMEGROWN 6035

BD: 2/20/16 • AAA#: 18542959 • Tattoo: 6035

SIRE: **CTS Remedy 1T01**
 Connealy Thunder
 CTS 7V03 Bellemere Maid 9T02

DAM: **EA Blanche 4137**
 Ellingson Format 2205
 EA Blanche 1137

Baldrige Kaboom K243 KCF
 Parka of Conanga 241
 L T 598 Bando 9074
 SVA Rita 7V03 of 1407 502
 LT Territory 5824 of EA
 EA Emblynette 9184
 TC Aberdeen 759
 EA Blanche 7921

CED	BW	WW	YW	Milk
6	1.3	56	105	29

Sons sell as Lots 50-53, pages 22 through 23.

REFERENCE SIRES

S CHISUM 255

BD: 3/15/12 • AAA#: 17298481 • Tattoo: 255

S Alliance 3313
SIRE. S Chisum 6175
 S Gloria 464
 Shipwheel Chinook
DAM. S Blossom 0278
 S Blossom 8378

Paws Up Alliance 9561
 Paws Up 9048 Emulation Ext
 S Eclipse 169
 S Gloria 209
 H A Image Maker 0415
 Apex Eriskay 5506
 R&S Expedition 1404
 S Blossom 4190

CED	BW	WW	YW	Milk
13	-0.3	57	90	17

Sons sell as Lots 54-57, pages 24 through 25.



S Chisum 255

EXAR DECLARATION 1686B

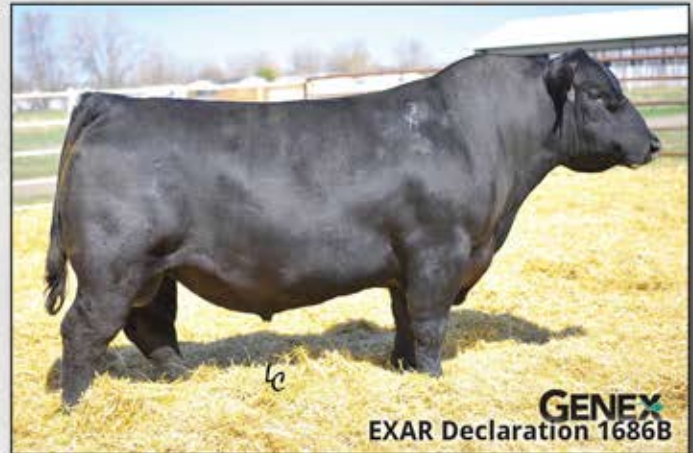
BD: 1/2/11 • AAA#: 16838893 • Tattoo: 1686B

O C C Emblazon 854E
SIRE. Rito 6EM3 of 4L1 Emblazon
 Rita 4L1 of 2536 208
 Connealy Onward
DAM. Sitz Henrietta Pride 643T
 Sitz Henrietta Pride 81M

D H D Traveler 6807
 Dixie Erica of C H 1019
 Bon View New Design 208
 G A R Precision 2536
 Connealy Lead On
 Altune of Conanga 6104
 Sitz Value 7097
 Sitz Henrietta Pride 1370

CED	BW	WW	YW	Milk
11	1.1	56	103	25

Sons sell as Lots 34-38, grandson sells as Lot 39, pages 16 through 17.



EXAR Declaration 1686B

RTA CLOUD PEAK 82

BD: 2/2/18 • AAA#: 19264986 • Tattoo: 82

Sitz Alliance 6595
SIRE. Sitz Peak Legacy 9613
 Sitz Blackcap 2841
 KA Motive 356
DAM. GGK Lady 61
 GGK Lady 31

Sitz Traveler 8180
 Sitz Barbaramere Jet 2698
 Sitz Bonanza 6177
 Sitz Blackcap 2775
 Soo Line Motive 9016
 KA Canyon Betty 927
 HF Prowler 43U
 Willekes Lady 112

CED	BW	WW	YW	Milk
6	0.0	51	95	25

Sons sell as Lots 42-44, page 19.



RTA Cloud Peak 82

S A V HESSTON 2217

BD: 3/1/12 • AAA#: 17318946 • Tattoo: 2217

S A V Heritage 6295
SIRE. S A V Harvestor 0338
 S A V Emblynette 7749
 S A F 598 Bando 5175
DAM. S A V Emblynette 3301
 S A V Emblynette 7319

CAR Duke 104
 S A V Blackcap May 4136
 S A V Net Worth 4200
 Sav Emblynette Diamond 6377
 Bon View Bando 598
 S A F Royal Lass 1002
 S A V Ext Emulation 5040
 Sav Emblynette Diamond 5369

CED	BW	WW	YW	Milk
4	3.4	62	103	22

Sons sell as Lots 45-49, pages 20 through 21.



S A V Hesston 2217



LOT 1

HERD SIRE PROSPECT



RTA LILY 437 / DAM OF LOT 1

Sons of
U-2 COALITION 206C

Coalition stamps his progeny with his good hip, correct structure and expressive muscle shape. Sons are solid performing, good looking bulls with modest birth weights. Daughters are consistent in their type - deep ribbed, good structured and feminine fronted, with impeccable udder quality and productive!



LOT 2

» **LOT 1** «

RTA CASH 026

BD: 2/13/20 • AAA#: 19876876 • Tattoo: 026

SIRE: **U-2 Coalition 206C**
U2 Erelite 109Z

DAM: **RTA Lily 437**
RTA Lily 08

#Connealy Consensus 7229
HF Miss Blackcap 27R
Young Dale Xclusive 25X
U-2 Erelite 1X
Rito 707 of Ideal 3407 7075
S A V Blackcap May 4136
#S A V Net Worth 4200
BDA Pride 5061

Act. BW	BW Ratio	Adj. WW	WW Ratio	CED	BW	WW	YW	Milk
90	103	706	100	6	1.9	58	112	19

This is a bull that we are tremendously proud of. He is powerfully built and stunning from all angles with superior soundness and herd sire authority. He is EXTREMELY docile. We plan to use him back in our program heavily. His dam and grandam have both had a huge influence on our herd. RTA Lily 437 has produced two other sale toppers in the last three years. We wish we had 100 more just like her.

*Rafter T Angus will pay for a 50K DNA test at the buyer's request.
Dam's Production: WR 5-99

» **LOT 2** «

RTA WAGONER 033

BD: 2/1/20 • AAA#: 19876613 • Tattoo: 033

SIRE: **U-2 Coalition 206C**
U2 Erelite 109Z

DAM: **RTA Amity's Lass 893**
#RTA Amity's Lass 474

HF Syndicate 213Z
S Chisum 255

#Connealy Consensus 7229
HF Miss Blackcap 27R
Young Dale Xclusive 25X
U-2 Erelite 1X
#S Chisum 6175
#S Blossom 0278
#Soo Line Motive 9016
RTA Amity's Lass 201

Act. BW	BW Ratio	Adj. WW	WW Ratio	CED	BW	WW	YW	Milk
89	111	716	101	4	2.2	62	107	19

This Coalition son is moderate framed and has three generations of our most productive cows in his pedigree.

Dam's Production: WR 1-101

» LOT 3 «

RTA **NELSON** 013

BD: 2/12/20 • AAA#: 19876875 • Tattoo: 013

SIRE: **U-2 Coalition 206C**
U2 Erelite 109Z

DAM: **#RTA Amity's Lass 54**
RTA Presidio 384
RTA Amity's Lass 201

#Connealy Consensus 7229
HF Miss Blackcap 27R
Young Dale Xclusive 25X
U-2 Erelite 1X
EF Presidio 9001
RTA Blackcap 010
#KMK Alliance 6595 187
#RTA Amity's Lass 924

Act. BW	BW Ratio	Adj. WW	WW Ratio	CED	BW	WW	YW	Milk
93	107	759	108	3	1.7	64	112	24

Dam's Production: WR 4-106

» LOT 4 «

RTA **COALITION** 040

BD: 2/13/20 • AAA#: 19876869 • Tattoo: 040

SIRE: **U-2 Coalition 206C**
U2 Erelite 109Z

DAM: **RTA Amity's Lass 694**
B Bar Joe Hero 2774
RTA Amity's Lass 201

#Connealy Consensus 7229
HF Miss Blackcap 27R
Young Dale Xclusive 25X
U-2 Erelite 1X
RA Joe Hero
B Bar Miss Wix 277
#KMK Alliance 6595 187
#RTA Amity's Lass 924

Act. BW	BW Ratio	Adj. WW	WW Ratio	CED	BW	WW	YW	Milk
89	103	644	91	6	0.7	51	96	20

Dam's Production: WR 3-96

UNDERSTANDING CALVING EASE SCORES

Throughout the catalog we have selected bulls we feel are definite calving ease and should be considered to use on heifers. These notes can be found in the footnote section of the lot boxes.



LOT 4

Sale Day Conference Call

It's as easy as

1. Pre-Register for your buyer number
2. Receive toll free call in # and pin
3. Get last minute instructions for call

Give Bill Pelton a call in advance

"Our goal is to get you in the seats but if you can't make it on sale day, we're fixin' to get you On The Line"



406.671.5100 bill@billpelton.com www.BILLPELTON.com

If you can't attend the sale bid over the phone with Pelton Livestock!





U-2 COALITION 206C / SIRE OF LOTS 1-12

Sons of GGK LADY 31

GGK Lady 31 is the Grandam to the herd sire Cloud Peak 82 and this years Lot 37. She is a very versatile cow, every mating is a successful cross. All of her embryo progeny have proven to be hardy at high elevations. These calves summered with their recip mothers at an elevation of 7000+ feet in the Big Horn Mountains above Buffalo WY.



GGK LADY 31 / DONOR DAM OF LOTS 5-12

HIGH ELEVATION PROSPECTS [LOTS 5-12]

» LOT 5 «

RTA **COALITION** 064

BD: 3/8/20 • AAA#: 19919697 • Tattoo: 064 • ET

SIRE. **U-2 Coalition 206C**
 HF Syndicate 213Z
 U2 Erelite 109Z

DAM. **GGK Lady 31**
 #HF Prowler 43U
 Willekes Lady 112

#Connealy Consensus 7229
 HF Miss Blackcap 27R
 Young Dale Xclusive 25X
 U-2 Erelite 1X
 HF Kodiak 5R
 HF Rosebud 98P
 #S A V Net Worth 4200
 Willekes Lady of 4402

Act. BW	BW Ratio	Adj. WW	WW Ratio	CED	BW	WW	YW	Milk
ET	100	620	100	6	1.8	58	108	23

*EPDs updated 12/31/2020

» LOT 6 «

RTA **COALITION** 065

BD: 3/8/20 • AAA#: 19919698 • Tattoo: 065 • ET

SIRE. **U-2 Coalition 206C**
 HF Syndicate 213Z
 U2 Erelite 109Z

DAM. **GGK Lady 31**
 #HF Prowler 43U
 Willekes Lady 112

#Connealy Consensus 7229
 HF Miss Blackcap 27R
 Young Dale Xclusive 25X
 U-2 Erelite 1X
 HF Kodiak 5R
 HF Rosebud 98P
 #S A V Net Worth 4200
 Willekes Lady of 4402

Act. BW	BW Ratio	Adj. WW	WW Ratio	CED	BW	WW	YW	Milk
ET	100	548	100	6	1.8	58	108	23

*EPDs updated 12/31/2020



LOT 7

» LOT 7 «

RTA **COALITION** 066

BD: 3/10/20 • AAA#: 19916883 • Tattoo: 066 • ET

SIRE. **U-2 Coalition 206C**
 HF Syndicate 213Z
 U2 Erelite 109Z

DAM. **GGK Lady 31**
 #HF Prowler 43U
 Willekes Lady 112

#Connealy Consensus 7229
 HF Miss Blackcap 27R
 Young Dale Xclusive 25X
 U-2 Erelite 1X
 HF Kodiak 5R
 HF Rosebud 98P
 #S A V Net Worth 4200
 Willekes Lady of 4402

Act. BW	BW Ratio	Adj. WW	WW Ratio	CED	BW	WW	YW	Milk
ET	100	651	100	6	1.8	58	108	23

*EPDs updated 12/31/2020

Some of our ET bulls were pending registration at the time of printing the sale catalog. We will publish their registration numbers and EPD information once available by updating the digital catalog and PDF file on our website, www.rafterangus.com. If you have any questions please contact us.

» **LOT 8** «

RTA **COALITION** 068

BD: 3/9/20 • AAA#: 19919699 • Tattoo: 068 • ET

HF Syndicate 213Z
SIRE. U-2 Coalition 206C
 U2 Erelite 109Z

#HF Prowler 43U
DAM. G GK Lady 31
 Willekes Lady 112

#Connealy Consensus 7229
 HF Miss Blackcap 27R
 Young Dale Xclusive 25X
 U-2 Erelite 1X
 HF Kodiak 5R
 HF Rosebud 98P
 #S A V Net Worth 4200
 Willekes Lady of 4402

Act. BW	BW Ratio	Adj. WW	WW Ratio	CED	BW	WW	YW	Milk
ET	100	700	100	6	1.8	58	108	23

*EPDs updated 12/31/2020



LOT 8

» **LOT 9** «

RTA **COALITION** 074

BD: 3/7/20 • AAA#: 19916882 • Tattoo: 074 • ET

HF Syndicate 213Z
SIRE. U-2 Coalition 206C
 U2 Erelite 109Z

#HF Prowler 43U
DAM. G GK Lady 31
 Willekes Lady 112

#Connealy Consensus 7229
 HF Miss Blackcap 27R
 Young Dale Xclusive 25X
 U-2 Erelite 1X
 HF Kodiak 5R
 HF Rosebud 98P
 #S A V Net Worth 4200
 Willekes Lady of 4402

Act. BW	BW Ratio	Adj. WW	WW Ratio	CED	BW	WW	YW	Milk
ET	100	721	100	6	1.8	58	108	23

*EPDs updated 12/31/2020



LOT 9

» **LOT 10** «

RTA **COALITION** 075

BD: 3/12/20 • AAA#: 19916884 • Tattoo: 075 • ET

HF Syndicate 213Z
SIRE. U-2 Coalition 206C
 U2 Erelite 109Z

#HF Prowler 43U
DAM. G GK Lady 31
 Willekes Lady 112

#Connealy Consensus 7229
 HF Miss Blackcap 27R
 Young Dale Xclusive 25X
 U-2 Erelite 1X
 HF Kodiak 5R
 HF Rosebud 98P
 #S A V Net Worth 4200
 Willekes Lady of 4402

Act. BW	BW Ratio	Adj. WW	WW Ratio	CED	BW	WW	YW	Milk
ET	100	604	100	6	1.8	58	108	23

*EPDs updated 12/31/2020

» **LOT 11** «

RTA **COALITION** 076

BD: 3/13/20 • AAA#: 19916881 • Tattoo: 076 • ET

HF Syndicate 213Z
SIRE. U-2 Coalition 206C
 U2 Erelite 109Z

#HF Prowler 43U
DAM. G GK Lady 31
 Willekes Lady 112

#Connealy Consensus 7229
 HF Miss Blackcap 27R
 Young Dale Xclusive 25X
 U-2 Erelite 1X
 HF Kodiak 5R
 HF Rosebud 98P
 #S A V Net Worth 4200
 Willekes Lady of 4402

Act. BW	BW Ratio	Adj. WW	WW Ratio	CED	BW	WW	YW	Milk
ET	100	685	100	6	1.8	58	108	23

*EPDs updated 12/31/2020



LOT 12

» **LOT 12** «

RTA **COALITION** 077

BD: 3/9/20 • AAA#: 19919696 • Tattoo: 077 • ET

HF Syndicate 213Z
SIRE. U-2 Coalition 206C
 U2 Erelite 109Z

#HF Prowler 43U
DAM. G GK Lady 31
 Willekes Lady 112

#Connealy Consensus 7229
 HF Miss Blackcap 27R
 Young Dale Xclusive 25X
 U-2 Erelite 1X
 HF Kodiak 5R
 HF Rosebud 98P
 #S A V Net Worth 4200
 Willekes Lady of 4402

Act. BW	BW Ratio	Adj. WW	WW Ratio	CED	BW	WW	YW	Milk
ET	100	690	100	6	1.8	58	108	23

*EPDs updated 12/31/2020



LD CAPITALIST 316 / SIRE OF LOTS 13-24

» **LOT 13** «

RTA **WILLIAMS 06**

BD: 2/18/20 • AAA#: 19873351 • Tattoo: 006

#Connealy Capitalist 028 #S A V Final Answer 0035
SIRE. LD Capitalist 316 Prides Pita of Conanga 8821
 LD Dixie Erica 2053 #C A Future Direction 5321
 LD Dixie Erica Oar 0853
 HF Thunderbird 146Y #HF Tiger 5T
DAM. RTA Ally 680 HF Echo 187N
 RTA Ally 327 #Leachman Right Time
 #PP Blackcap Marshal Dca 3101

Act. BW	BW Ratio	Adj. WW	WW Ratio	CED	BW	WW	YW	Milk
81	94	719	102	10	-0.4	54	94	26

This Capitalist son is a stylish calving ease bull.
 Suitable for heifers / Dam's Production: WR 3-98

Sons of
LD CAPITALIST 316

LD Capitalist 316 is a calving ease bull that is phenotypically phenomenal! Heavy muscled, bold ribbed and super sound footed - he couples extreme calving ease with performance and power. Here is a bull to inject muscle, substance and shape with balanced EPDs and the look we like.

» **LOT 14** «

RTA **NELSON 03**

BD: 2/29/20 • AAA#: 19873367 • Tattoo: 003

#Connealy Capitalist 028 #S A V Final Answer 0035
SIRE. LD Capitalist 316 Prides Pita of Conanga 8821
 LD Dixie Erica 2053 #C A Future Direction 5321
 LD Dixie Erica Oar 0853
 #S A V Resource 1441 Rito 707 of Ideal 3407 7075
DAM. #RTA Carly 427 S A V Blackcap May 4136
 #RTA Net Worth 048 #S A V Net Worth 4200
 BDA Bemindful Maiden 5095

Act. BW	BW Ratio	Adj. WW	WW Ratio	CED	BW	WW	YW	Milk
95	109	763	108	4	2.7	71	126	27

Dam's Production: WR 5-107

» **LOT 15** «

RTA **CAPITALIST 010**

BD: 2/1/20 • AAA#: 19873284 • Tattoo: 010

#Connealy Capitalist 028 #S A V Final Answer 0035
SIRE. LD Capitalist 316 Prides Pita of Conanga 8821
 LD Dixie Erica 2053 #C A Future Direction 5321
 LD Dixie Erica Oar 0853
 Hilltop Aught-Six 6216 A A R Thirty-Aught-Six
DAM. RTA Evie 888 Hilltop Chloe Lass 748
 RTA Evie 668 B Bar Joe Hero 2774
 RTA Evie 444

Act. BW	BW Ratio	Adj. WW	WW Ratio	CED	BW	WW	YW	Milk
89	111	760	108	5	1.7	65	115	29

Dam's Production: WR 1-108

» LOT 16 «

RTA **OWENS** 011

BD: 2/16/20 • AAA#: 19875712 • Tattoo: 011

#Connealy Capitalist 028
SIRE. LD Capitalist 316
 LD Dixie Erica 2053

KA Motive 356
DAM. RTA Amity's Lass 692
 #RTA Amity's Lass 924

#S A V Final Answer 0035
 Prides Pita of Conanga 8821
 #C A Future Direction 5321
 LD Dixie Erica Oar 0853
 #Soo Line Motive 9016
 #KA Canyon Betty 927
 Sitz Peak Legacy 9613
 BDA Eline Lass 0110

Act. BW	BW Ratio	Adj. WW	WW Ratio	CED	BW	WW	YW	Milk
92	107	718	102	4	1.2	59	103	26

Dam's Production: WR 3-100



» LOT 17 «

RTA **MILSAP** 014

BD: 2/20/20 • AAA#: 19875713 • Tattoo: 014

#Connealy Capitalist 028
SIRE. LD Capitalist 316
 LD Dixie Erica 2053

RTA Cash 581
DAM. RTA Jasmine 752
 RTA Bliss 554

#S A V Final Answer 0035
 Prides Pita of Conanga 8821
 #C A Future Direction 5321
 LD Dixie Erica Oar 0853
 #Barstow Cash
 RTA Traveler 906
 #Soo Line Motive 9016
 RTA Total Beauty 317

Act. BW	BW Ratio	Adj. WW	WW Ratio	CED	BW	WW	YW	Milk
78	95	699	98	12	-1.3	54	93	27

014 is an eye appealing bull, he offers power and thickness in a calving ease package.

Suitable for heifers / Dam's Production: WR 2-100



» LOT 18 «

RTA **CAPITALIST** 016

BD: 1/27/20 • AAA#: 19875717 • Tattoo: 016

#Connealy Capitalist 028
SIRE. LD Capitalist 316
 LD Dixie Erica 2053

#HF Tiger 5T
DAM. RTA Evie 896
 RTA Evie 666

#S A V Final Answer 0035
 Prides Pita of Conanga 8821
 #C A Future Direction 5321
 LD Dixie Erica Oar 0853
 HF Kodiak 5R
 HF Echo 84R
 B Bar Joe Hero 2774
 RTA Evie 444

Act. BW	BW Ratio	Adj. WW	WW Ratio	CED	BW	WW	YW	Milk
80	101	657	93	11	-0.5	54	99	27

Suitable for heifers / Dam's Production: WR 1-93

» LOT 19 «

RTA **PRICE** 021

BD: 1/26/20 • AAA#: 19875718 • Tattoo: 021

#Connealy Capitalist 028
SIRE. LD Capitalist 316
 LD Dixie Erica 2053

#HF Tiger 5T
DAM. RTA Amity's Lass 897
 RTA Amity's Lass 694

#S A V Final Answer 0035
 Prides Pita of Conanga 8821
 #C A Future Direction 5321
 LD Dixie Erica Oar 0853
 HF Kodiak 5R
 HF Echo 84R
 B Bar Joe Hero 2774
 RTA Amity's Lass 201

Act. BW	BW Ratio	Adj. WW	WW Ratio	CED	BW	WW	YW	Milk
74	94	636	90	12	-1.3	51	93	26

This bull is backed by a maternally charged pedigree. His Granddam RTA Amity's Lass 201 is in the pedigree of several of our best producing cows. If your making a short list of calving ease bulls, you're going to want to put a star by this one.

Suitable for heifers / Dam's Production: WR 1-90

» LOT 20 «

RTA **DENVER** 023

BD: 1/26/20 • AAA#: 19875715 • Tattoo: 023

#Connealy Capitalist 028
SIRE. LD Capitalist 316
 LD Dixie Erica 2053

B Bar Joe Hero 2774
DAM. RTA Lass 809
 RTA Lass 127

#S A V Final Answer 0035
 Prides Pita of Conanga 8821
 #C A Future Direction 5321
 LD Dixie Erica Oar 0853

RA Joe Hero
 B Bar Miss Wix 277
 Crook Mt Hero 59
 #RTA Lass 915

Act. BW	BW Ratio	Adj. WW	WW Ratio	CEB	BW	WW	YW	Milk
83	105	799	113	7	0.4	62	105	31

Suitable for large heifers / Dam's Production: WR 1-113

» LOT 21 «

RTA **CAPITALIST** 029

BD: 2/17/20 • AAA#: 19873349 • Tattoo: 029

#Connealy Capitalist 028
SIRE. LD Capitalist 316
 LD Dixie Erica 2053

#HF Tiger 5T
DAM. RTA Lucies Right Time 795
 RTA Lucies Right Time 101

#S A V Final Answer 0035
 Prides Pita of Conanga 8821
 #C A Future Direction 5321
 LD Dixie Erica Oar 0853

HF Kodiak 5R
 HF Echo 84R
 Crook Mt Hero 59
 RTA Lucies Right Time 900

Act. BW	BW Ratio	Adj. WW	WW Ratio	CEB	BW	WW	YW	Milk
82	100	707	99	9	0.2	58	102	28

Suitable for heifers / Dam's Production: WR 2-99

» LOT 22 «

RTA **CAPITALIST** 035

BD: 2/17/20 • AAA#: 19873354 • Tattoo: 035

#Connealy Capitalist 028
SIRE. LD Capitalist 316
 LD Dixie Erica 2053

HF Thunderbird 146Y
DAM. RTA Echo 652
 RTA Echo 223

#S A V Final Answer 0035
 Prides Pita of Conanga 8821
 #C A Future Direction 5321
 LD Dixie Erica Oar 0853

#HF Tiger 5T
 HF Echo 187N
 Sitz Peak Legacy 9613
 RTA Betty 8219

Act. BW	BW Ratio	Adj. WW	WW Ratio	CEB	BW	WW	YW	Milk
82	95	685	97	12	-1.2	53	92	26

Suitable for heifers / Dam's Production: WR 3-96

» LOT 23 «

RTA **WHITLEY** 038

BD: 2/16/20 • AAA#: 19875714 • Tattoo: 038

#Connealy Capitalist 028
SIRE. LD Capitalist 316
 LD Dixie Erica 2053

B Bar Joe Hero 2774
DAM. RTA April 766
 RTA April 5106

#S A V Final Answer 0035
 Prides Pita of Conanga 8821
 #C A Future Direction 5321
 LD Dixie Erica Oar 0853

RA Joe Hero
 B Bar Miss Wix 277
 #Barstow Cash
 RTA Traveler 906

Act. BW	BW Ratio	Adj. WW	WW Ratio	CEB	BW	WW	YW	Milk
82	98	735	104	9	-0.2	61	105	28

This stylish Capitalist son has been an eye catcher since birth. He offers power and thickness in a calving ease package.

Suitable for large heifers / Dam's Production: WR 2-107



» LOT 24 «

RTA **CAPITALIST** 042

BD: 2/15/20 • AAA#: 19875719 • Tattoo: 042 • Twin

#Connealy Capitalist 028
SIRE. LD Capitalist 316
 LD Dixie Erica 2053

#Soo Line Motive 9016
DAM. RTA Elluna 682
 #RTA Elluna 259

#S A V Final Answer 0035
 Prides Pita of Conanga 8821
 #C A Future Direction 5321
 LD Dixie Erica Oar 0853

HF Kodiak 5R
 TLA Beauty 5R
 #KMK Alliance 6595 I87
 RTA Elluna 908

Act. BW	BW Ratio	Adj. WW	WW Ratio	CEB	BW	WW	YW	Milk
86	108			4	1.8	61	105	26

Dam's Production: WR 1-95



Sons of
MCCONNELL ALTITUDE 3114

Altitude continues to sire moderate birth weight, stout-made progeny with plenty of middle and a look from the side that will catch everyones eye. Daughters are feminine-fronted, sound-made cattle with added look and udder quality. With the maternal strength of the McConnell herd in his blood - and don't forget that low PAP score of 38 - expect Altitude daughters to have a lasting impact on your herd.

» LOT 25 «

RTA **ROGERS 01**

BD: 2/20/20 • AAA#: 19876699 • Tattoo: 001

#Connealy Comrade 1385 #Connealy Consensus 7229
SIRE. McConnell Altitude 3114 Happy Gee of Conanga 919
 #MA Beauty 0156 #S A V 004 Density 4336
 M A Lucys Traveler 9859
 Paintrock Answer 248-377-1 Paintrock Final Answer 248-9
DAM. RTA Sarah 344 TP Lady EXT of PR 130-9
 BDA Sarah 3002 #Gardens Prime Time
 V D A R Elluna 4169

Act. BW	BW Ratio	Adj. WW	WW Ratio	CED	BW	WW	YW	Milk
95	109	719	102	3	1.7	52	92	24

Dam's Production: WR 5-103



BAGGED WHEAT SILAGE

» LOT 26 «

RTA **ALTITUDE 09**

BD: 2/25/20 • AAA#: 19876698 • Tattoo: 009

#Connealy Comrade 1385 #Connealy Consensus 7229
SIRE. McConnell Altitude 3114 Happy Gee of Conanga 919
 #MA Beauty 0156 #S A V 004 Density 4336
 M A Lucys Traveler 9859
 RTA Alliance 117 Sitz Peak Legacy 9613
DAM. RTA Bessie 379 RTA Betty 8219
 BDA Bessie 135 HF Worth It All 805
 BDA Bessie 5059

Act. BW	BW Ratio	Adj. WW	WW Ratio	CED	BW	WW	YW	Milk
91	105	712	101	4	1.2	53	92	22

Dam's Production: WR 5-100



LOT 26

» LOT 27 «

RTA **ALTITUDE** 018

BD: 2/28/20 • AAA#: 19909735 • Tattoo: 018

#Connealy Comrade 1385 #Connealy Consensus 7229
SIRE. McConnell Altitude 3114 Happy Gee of Conanga 919
 #MA Beauty 0156 #S A V 004 Density 4336
 M A Lucys Traveler 9859
 Sitz Peak Legacy 9613 #Sitz Alliance 6595
DAM. RTA Beauty 250 Sitz Blackcap 2841
 RTA Beauty 018 #S A V Net Worth 4200
 BDA Beauty 4041

Act. BW	BW Ratio	Adj. WW	WW Ratio	CED	BW	WW	YW	Milk
93	107	705	100	6	0.5	52	95	23

Dam's Production: WR 7-97

» LOT 28 «

RTA **ALTITUDE** 027

BD: 2/14/20 • AAA#: 19876609 • Tattoo: 027

#Connealy Comrade 1385 #Connealy Consensus 7229
SIRE. McConnell Altitude 3114 Happy Gee of Conanga 919
 #MA Beauty 0156 #S A V 004 Density 4336
 M A Lucys Traveler 9859
 RTA Presidio 384 EF Presidio 9001
DAM. RTA Elena 669 RTA Blackcap 010
 RTA Elena 226 RTA Marathon 912
 #Holman Elena 7003

Act. BW	BW Ratio	Adj. WW	WW Ratio	CED	BW	WW	YW	Milk
84	98	667	95	9	-0.9	44	80	23

Dam's Production: WR 3-99



» LOT 29 «

RTA **HAGGARD** 030

BD: 2/19/20 • AAA#: 19876641 • Tattoo: 030

#Connealy Comrade 1385 #Connealy Consensus 7229
SIRE. McConnell Altitude 3114 Happy Gee of Conanga 919
 #MA Beauty 0156 #S A V 004 Density 4336
 M A Lucys Traveler 9859
 KA Motive 356 #Soo Line Motive 9016
DAM. RTA Bessie 5108 #KA Canyon Betty 927
 RTA Bessie 280 M Diamond Alliance 780
 BDA Bessie 6012

Act. BW	BW Ratio	Adj. WW	WW Ratio	CED	BW	WW	YW	Milk
82	94	627	89	8	-0.8	44	82	22

030 is one of the most attractive bulls in the sale. His dam is easy fleshing and has a flawless udder.

Suitable for large heifers / Dam's Production: WR 3-97

» LOT 30 «

RTA **ALTITUDE** 037

BD: 2/19/20 • AAA#: 19876649 • Tattoo: 037

#Connealy Comrade 1385 #Connealy Consensus 7229
SIRE. McConnell Altitude 3114 Happy Gee of Conanga 919
 #MA Beauty 0156 #S A V 004 Density 4336
 M A Lucys Traveler 9859
 Paintrock Answer 248-377-1 Paintrock Final Answer 248-9
DAM. RTA Hedy 491 TP Lady EXT of PR 130-9
 RTA Hedy 217 PRA Tom 8119
 BDA Hedy 5067

Act. BW	BW Ratio	Adj. WW	WW Ratio	CED	BW	WW	YW	Milk
84	97	633	90	8	-0.4	43	78	22

Suitable for heifers / Dam's Production: WR 5-94

» LOT 31 «

RTA **ALTITUDE** 031

BD: 2/21/20 • AAA#: 19876701 • Tattoo: 031

#Connealy Comrade 1385 #Connealy Consensus 7229
SIRE. McConnell Altitude 3114 Happy Gee of Conanga 919
 #MA Beauty 0156 #S A V 004 Density 4336
 M A Lucys Traveler 9859
 #KMK Alliance 6595 187 #Sitz Alliance 6595
DAM. RTA Amity's Lass 201 #G A R Ext 916
 #RTA Amity's Lass 924 Sitz Peak Legacy 9613
 BDA Eline Lass 0110

Act. BW	BW Ratio	Adj. WW	WW Ratio	CED	BW	WW	YW	Milk
68	78	745	106	12	-2.8	59	98	23

This bulls dam is nine years old and still AI's every year. She has an impressive calving interval of 7 calves at 368 days. This sleep all night heifer bull has been a standout all summer.

Suitable for heifers / Dam's Production: WR 7-103



LOT 32



LOT 32



LOT 33

» **LOT 32** «

RTA PRIDE 032

BD: 2/17/20 • AAA#: 19876607 • Tattoo: 032

SIRE. McConnell Altitude 3114
 #Connealy Comrade 1385
 #MA Beauty 0156

DAM. RTA Kathy 675
 #Soo Line Motive 9016
 RTA Kathy 396

#Connealy Consensus 7229
 Happy Gee of Conanga 919
 #S A V 004 Density 4336
 M A Lucys Traveler 9859
 HF Kodiak 5R
 TLA Beauty 5R
 EF Presidio 9001
 RTA Kathy 806

Act. BW	BW Ratio	Adj. WW	WW Ratio	CED	BW	WW	YW	Milk
85	99	705	100	7	0.5	51	95	23

Pictures do not do this bull justice. He has lots of stretch and style.
 Dam's Production: WR 3-102

» **LOT 33** «

RTA ROBBINS 039

BD: 2/20/20 • AAA#: 19876638 • Tattoo: 039

SIRE. McConnell Altitude 3114
 #Connealy Comrade 1385
 #MA Beauty 0156

DAM. RTA Emma 572
 #Soo Line Motive 9016
 #RTA Amity's Lass 924

#Connealy Consensus 7229
 Happy Gee of Conanga 919
 #S A V 004 Density 4336
 M A Lucys Traveler 9859
 HF Kodiak 5R
 TLA Beauty 5R
 Sitz Peak Legacy 9613
 BDA Eline Lass 0110

Act. BW	BW Ratio	Adj. WW	WW Ratio	CED	BW	WW	YW	Milk
92	106	661	94	4	0.6	49	90	22

If you are looking for extreme docility, you should put a star by this one. This calf quickly became one of our favorites at an early age. He is square topped and big hiped.
 Dam's Production: WR 4-103



Sons of
EXAR DECLARATION 1686B

Maternal strength and performance. He offers a unique combination of CED and Ribeye in a thick, deep, sound and attractive package.



LOT 34

» **LOT 34** «

RTA **TRAVIS** 012

BD: 1/24/20 • AAA#: 19876588 • Tattoo: 012

#Rito 6EM3 of 4L1 Emblazon #O C C Emblazon 854E
SIRE. EXAR Declaration 1686B Rita 4L1 of 2536 208
 Sitz Henrietta Pride 643T #Connealy Onward
 Sitz Henrietta Pride 81M
 B Bar Joe Hero 2774 RA Joe Hero
DAM. RTA Fran 882 B Bar Miss Wix 277
 RTA Fran 8003 BDA Bushmaster 9720
 BDA Lucy 5177

Act. BW	BW Ratio	Adj. WW	WW Ratio	CED	BW	WW	YW	Milk
82	103	690	98	8	0.7	46	87	25

Suitable for heifers / Dam's Production: WR 1-98

» **LOT 35** «

RTA **DECLARATION** 08

BD: 1/25/20 • AAA#: 19910816 • Tattoo: 008

#Rito 6EM3 of 4L1 Emblazon #O C C Emblazon 854E
SIRE. EXAR Declaration 1686B Rita 4L1 of 2536 208
 Sitz Henrietta Pride 643T #Connealy Onward
 Sitz Henrietta Pride 81M
 B Bar Righteous 76 #S A V Resource 1441
DAM. RTA Total Pride 885 #B Bar Lady Jewel 116
 RTA Total Pride 523 #Barstow Cash
 RTA Total Pride 949

Act. BW	BW Ratio	Adj. WW	WW Ratio	CED	BW	WW	YW	Milk
70	90	653	92	14	-1.5	45	89	24

Suitable for heifers / Dam's Production: WR 1-92

» **LOT 36** «

RTA **DECLARATION** 019

BD: 2/24/20 • AAA#: 19876590 • Tattoo: 019

#Rito 6EM3 of 4L1 Emblazon #O C C Emblazon 854E
SIRE. EXAR Declaration 1686B Rita 4L1 of 2536 208
 Sitz Henrietta Pride 643T #Connealy Onward
 Sitz Henrietta Pride 81M
 Paintrock Answer 248-377-1 Paintrock Final Answer 248-9
DAM. RTA Eva 351 TP Lady EXT of PR 130-9
 RTA Eva 066 Sitz Peak Legacy 9613
 RTA Eva 8151

Act. BW	BW Ratio	Adj. WW	WW Ratio	CED	BW	WW	YW	Milk
93	107	742	105	9	0.8	55	97	25

Dam's Production: WR 6-100

» LOT 37 «

RTA **JONES** 061

BD: 2/14/20 • AAA#: 19876589 • Tattoo: 061

#Rito 6EM3 of 4L1 Emblazon
SIRE. EXAR Declaration 1686B
 Sitz Henrietta Pride 643T
 KA Motive 356

#O C C Emblazon 854E
 Rita 4L1 of 2536 208
 #Connealy Onward
 Sitz Henrietta Pride 81M
 #Soo Line Motive 9016
 #KA Canyon Betty 927
 #HF Prowler 43U
 Willekes Lady 112

DAM. G GK Lady 61
 G GK Lady 31

Act. BW	BW Ratio	Adj. WW	WW Ratio	CED	BW	WW	YW	Milk
87	101	708	101	8	1.1	52	93	26

061 is backed by mothers that work hard for us. His Grandam is the donor dam to several ET calves in this sale and he is the half brother to the herd sire Cloud Peak 82. His young dam is well on her way to being a staple in our herds future.

Dam's Production: WR 3-104



» HIGH ELEVATION PROSPECT [LOT 38]

» LOT 38 «

RTA **DECLARATION** 071

BD: 3/10/20 • AAA#: 19876592 • Tattoo: 071 • ET

#Rito 6EM3 of 4L1 Emblazon
SIRE. EXAR Declaration 1686B
 Sitz Henrietta Pride 643T
 #S A V Providence 6922

#O C C Emblazon 854E
 Rita 4L1 of 2536 208
 #Connealy Onward
 Sitz Henrietta Pride 81M
 #S A V 004 Predominant 4438
 S A V May 7238
 #S A V 8180 Traveler 004
 S A V Erica 0178

DAM. #S A V Erica 0242
 S A V Erica 4419

Act. BW	BW Ratio	Adj. WW	WW Ratio	CED	BW	WW	YW	Milk
ET	100	599	100	9	2.2	59	102	29

Dam's Production: WR 8-102



» LOT 39 «

RTA **DECLARATION** 046

BD: 2/13/20 • AAA#: 19875716 • Tattoo: 046

EXAR Declaration 1686B
SIRE. LC Declaration 1710
 #Sedgwicks Barbara Z439
 S Chisum 255

#Rito 6EM3 of 4L1 Emblazon
 Sitz Henrietta Pride 643T
 Limestone Jupiter U449
 Sedgwicks Barbara X4391
 #S Chisum 6175
 #S Blossom 0278
 #Soo Line Motive 9016
 RTA Bessie 8065

DAM. RTA Bessie 887
 RTA Bessie 535

Act. BW	BW Ratio	Adj. WW	WW Ratio	CED	BW	WW	YW	Milk
78	99	676	96	10	0.6	46	80	21

Suitable for heifers / Dam's Production: WR 1-96





*Focus
Wyatt DeVries*
RTA BESSIE 123 / DONOR DAM OF LOTS 40-41

Sons of
RTA BESSIE 123

RTA Bessie 123 is an easy keeping pathfinder cow that will inject power into every cross. She has an individual weaning ratio of 7 calves at 104. She is a Net Worth 4200 daughter that never lets us down. We know this mating creates daughters that are both eye appealing and very productive. Her sons are all big hipped, and exhibit superior thickness.

» **LOT 40** «

RTA RIGHTEOUS 02

BD: 2/21/20 • AAA#: 19919923 • Tattoo: 002 • ET

#S A V Resource 1441
SIRE. B Bar Righteous 76
#B Bar Lady Jewel 116
#S A V Net Worth 4200
DAM. #RTA Bessie 123
RTA Bessie 8065

Rito 707 of Ideal 3407 7075
S A V Blackcap May 4136
RA Joe Hero
B Bar Lady Jewel 884
#S A V 8180 Traveler 004
S A V May 2410
#Mytty In Focus
BDA Bessie 6012

Act. BW	BW Ratio	Adj. WW	WW Ratio	CED	BW	WW	YW	Milk
ET	100	691	100	10	-0.4	53	100	27

We continue to put great emphasis on cow families generation after generation. These two flush brothers are prime examples of that dedication. They are descendants of one of the great matriarchs in our herd.

*EPDs updated 12/31/2020

» **LOT 41** «

RTA RIGHTEOUS 025

BD: 2/20/20 • AAA#: 19919916 • Tattoo: 25 • ET

#S A V Resource 1441
SIRE. B Bar Righteous 76
#B Bar Lady Jewel 116
#S A V Net Worth 4200
DAM. #RTA Bessie 123
RTA Bessie 8065

Rito 707 of Ideal 3407 7075
S A V Blackcap May 4136
RA Joe Hero
B Bar Lady Jewel 884
#S A V 8180 Traveler 004
S A V May 2410
#Mytty In Focus
BDA Bessie 6012

Act. BW	BW Ratio	Adj. WW	WW Ratio	CED	BW	WW	YW	Milk
ET	100	683	100	10	-0.4	53	100	27

*EPDs updated 12/31/2020



B BAR RIGHTEOUS 76 / SIRE OF LOTS 40-41



LOT 41



» LOT 42 «

RTA **CLOUD PEAK** 069

BD: 2/21/20 • AAA#: 19901878 • Tattoo: 069 • ET

Sire: **RTA Cloud Peak 82**
 S A V Providence 6922
 GGK Lady 61

Dam: **#S A V Erica 0242**
 S A V Erica 4419

#Sitz Alliance 6595
 Sitz Blackcap 2841
 KA Motive 356
 GGK Lady 31
 #S A V 004 Predominant 4438
 S A V May 7238
 #S A V 8180 Traveler 004
 S A V Erica 0178

Act. BW	BW Ratio	Adj. WW	WW Ratio	CED	BW	WW	YW	Milk
ET	100	716	100	6	1.6	56	98	29

Dam's Production: WR 8-102

RTA **CLOUD PEAK 82** / SIRE OF LOTS 42-44

Sons of

RTA CLOUD PEAK 82

Home raised bull that was a sale topper in 2019. This bull has nearly perfect feet and structure. His sire Sitz Peak Legacy 9613 sired daughters in our herd that consistently weaned the biggest calves while always breeding back.

» LOT 43 «

RTA **CLOUD PEAK** 063

BD: 2/21/20 • AAA#: 19901879 • Tattoo: 063 • ET

Sire: **RTA Cloud Peak 82**
 S A V Providence 6922
 GGK Lady 61

Dam: **#S A V Erica 0242**
 S A V Erica 4419

#Sitz Alliance 6595
 Sitz Blackcap 2841
 KA Motive 356
 GGK Lady 31
 #S A V 004 Predominant 4438
 S A V May 7238
 #S A V 8180 Traveler 004
 S A V Erica 0178

Act. BW	BW Ratio	Adj. WW	WW Ratio	CED	BW	WW	YW	Milk
ET	100	669	100	6	1.6	56	98	29

Dam's Production: WR 8-102



LOT 43

» LOT 44 «

RTA **CLOUD PEAK** 070

BD: 2/23/20 • AAA#: 19901881 • Tattoo: 070 • ET

Sire: **RTA Cloud Peak 82**
 S A V Providence 6922
 GGK Lady 61

Dam: **#S A V Erica 0242**
 S A V Erica 4419

#Sitz Alliance 6595
 Sitz Blackcap 2841
 KA Motive 356
 GGK Lady 31
 #S A V 004 Predominant 4438
 S A V May 7238
 #S A V 8180 Traveler 004
 S A V Erica 0178

Act. BW	BW Ratio	Adj. WW	WW Ratio	CED	BW	WW	YW	Milk
ET	100	749	100	6	1.6	56	98	29

Dam's Production: WR 8-102



LOT 44

» LOT 45 «



LOT 45

RTA **WILLIAMS** 028

BD: 2/14/20 • AAA#: 19878465 • Tattoo: 028

#S A V Harvester 0338 #S A V Heritage 6295
 S A V Emblynette 3301 S A V Emblynette 7749
SIRE. S A V Hesston 2217 #S A F 598 Bando 5175
 S A V Emblynette 3301 #S A V Emblynette 7319
 WW Really Windy 3719 #V D A R Really Windy 4097
DAM. #RTA Lucy 5107 Boyum 9719 Emblazon Lady8023
 BDA Lucy 2168 BDA Travler 9935
 BDA Lucy 9826

Act. BW	BW Ratio	Adj. WW	WW Ratio	CED	BW	WW	YW	Milk
92	106	729	104	3	3.1	54	94	23

This Hesston son a rugged, big topped powerhouse. His dam has a calving interval of 4 calves at 373 days.
 Dam's Production: WR 3-106



S A V HESSTON 2217 / SIRE OF LOTS 46-49

Sons of
GGK LADY 31

GGK Lady 31 is the Grandam to the herd sire Cloud Peak 82 and this years Lot 37. She is a very versatile cow, every mating is a successful cross. All of her embryo progeny have proven to be hardy at high elevations. These calves summered with their recip mothers at an elevation of 7000+ feet in the Big Horn Mountains above Buffalo WY.



GGK LADY 31 / DONOR DAM OF LOTS 46-48

HIGH ELEVATION PROSPECTS [LOTS 46-49]



LOT 46

» LOT 46 «

RTA **HESSTON** 062

BD: 3/6/20 • AAA#: 19916625 • Tattoo: 062 • ET

#S A V Harvester 0338 #S A V Heritage 6295
 S A V Emblynette 3301 S A V Emblynette 7749
SIRE. S A V Hesston 2217 #S A F 598 Bando 5175
 S A V Emblynette 3301 #S A V Emblynette 7319
 #HF Prowler 43U HF Kodiak 5R
DAM. GGK Lady 31 HF Rosebud 98P
 Willekes Lady 112 #S A V Net Worth 4200
 Willekes Lady of 4402

Act. BW	BW Ratio	Adj. WW	WW Ratio	CED	BW	WW	YW	Milk
ET	100	606	100	4	3.0	58	100	24

*EPDs updated 12/31/2020

» LOT 47 «

RTA **HESSTON** 067

BD: 3/13/20 • AAA#: 19916626 • Tattoo: 067 • ET

#S A V Harvestor 0338
SIRE. S A V Hesston 2217
 S A V Emblynette 3301

#HF Prowler 43U
DAM. G GK Lady 31
 Willekes Lady 112

#S A V Heritage 6295
 S A V Emblynette 7749
 #S A F 598 Bando 5175
 #S A V Emblynette 7319
 HF Kodiak 5R
 HF Rosebud 98P
 #S A V Net Worth 4200
 Willekes Lady of 4402

Act. BW	BW Ratio	Adj. WW	WW Ratio	CED	BW	WW	YW	Milk
ET	100	621	100	4	3.0	58	100	24

*EPDs updated 12/31/2020



» LOT 48 «

RTA **HESSTON** 072

BD: 3/9/20 • AAA#: 19916627 • Tattoo: 072 • ET

#S A V Harvestor 0338
SIRE. S A V Hesston 2217
 S A V Emblynette 3301

#HF Prowler 43U
DAM. G GK Lady 31
 Willekes Lady 112

#S A V Heritage 6295
 S A V Emblynette 7749
 #S A F 598 Bando 5175
 #S A V Emblynette 7319
 HF Kodiak 5R
 HF Rosebud 98P
 #S A V Net Worth 4200
 Willekes Lady of 4402

Act. BW	BW Ratio	Adj. WW	WW Ratio	CED	BW	WW	YW	Milk
ET	100	669	100	4	3.0	58	100	24

*EPDs updated 12/31/2020



LOT 48

» LOT 49 «

RTA **HESSTON** 073

BD: 3/13/20 • AAA#: 19916628 • Tattoo: 073 • ET

#S A V Harvestor 0338
SIRE. S A V Hesston 2217
 S A V Emblynette 3301

#Sitz Upward 307R
DAM. #Miss Upward Casey 244
 #Alliance Bando 644 of WAG

#S A V Heritage 6295
 S A V Emblynette 7749
 #S A F 598 Bando 5175
 #S A V Emblynette 7319
 #Connealy Onward
 Sitz Henrietta Pride 81M
 #L T 598 Bando 9074
 Big Gal Alliance of W A G

Act. BW	BW Ratio	Adj. WW	WW Ratio	CED	BW	WW	YW	Milk
ET	100	695	100	3	3.4	61	107	29

*EPDs updated 12/31/2020



MISS UPWARD CASEY 244 / DAM OF LOT 49



GENEX
Sons of
ELLINGSON HOMEGROWN 6035

ELLINGSON HOMEGROWN 6035 / SIRE LOTS 50-53

Homegrown is a balanced-trait, maternally oriented sire backed by a tremendous cow line at Ellingsons. With breed-leading foot scores and top-tier \$Index rankings, Homegrown is the perfect choice for cattlemen wanting cow power and performance. Homegrown is siring cattle that are deep and thick with above average foot quality. As an added bonus, Homegrown offers very solid marbling, ribeye, \$B and ranks near the top for \$C.



» **LOT 50** «
RTA HOMEGROWN 04

BD: 1/29/20 • AAA#: 19876629 • Tattoo: 004

#CTS Remedy 1T01
SIRE. Ellingson Homegrown 6035
EA Blanche 4137
Hilltop Aught-Six 6216
DAM. RTA Black Cap 805
RTA Black Cap 687

#Connealy Thunder
CTS 7V03 Bellemere Maid 9T02
Ellingson Format 2205
#EA Blanche 1137
A A R Thirty-Aught-Six
Hilltop Chloe Lass 748
B Bar Joe Hero 2774
RTA Black Cap 464

Act. BW	BW Ratio	Adj. WW	WW Ratio	CED	BW	WW	YW	Milk
70	90	641	91	10	-0.9	46	87	27

Suitable for heifers / Dam's Production: WR 1-91



» **LOT 51** «

BD: 2/9/20 • AAA#: 19895169 • Tattoo: 022 • Twin

#CTS Remedy 1T01
SIRE. Ellingson Homegrown 6035
EA Blanche 4137
RTA Captain Morgan 40
DAM. RTA Bessie 755
RTA Bessie 535

#Connealy Thunder
CTS 7V03 Bellemere Maid 9T02
Ellingson Format 2205
#EA Blanche 1137
#Hoover Dam
Mc Bandolina 3Z
#Soo Line Motive 9016
RTA Bessie 8065

Act. BW	BW Ratio	Adj. WW	WW Ratio	CED	BW	WW	YW	Milk
74	94	693	98	8	-0.1	49	91	28

Suitable for heifers / Dam's Production: WR -



LOT 52



LOT 53



RTA KENNA 698 / GRANDDAM OF LOT 53

» **LOT 52** «

RTA JACKSON 07

BD: 1/28/20 • AAA#: 19876630 • Tattoo: 007

#CTS Remedy 1T01

SIRE. Ellingson Homegrown 6035

EA Blanche 4137

B Bar Joe Hero 2774

DAM. RTA Hedy 891

RTA Hedy 491

#Connealy Thunder
CTS 7V03 Bellemere Maid 9T02
Ellingson Format 2205
#EA Blanche 1137

RA Joe Hero
B Bar Miss Wix 277
Paintrock Answer 248-377-1
RTA Hedy 217

Act. BW	BW Ratio	Adj. WW	WW Ratio	CED	BW	WW	YW	Milk
88	110	775	110	4	1.6	56	102	28

07 had the heaviest actual weaning weight this fall. He will inject substance and power into your feeder calves and create daughters that you will want to keep.

Dam's Production: WR 1-110

» **LOT 53** «

RTA JENNINGS 024

BD: 1/25/20 • AAA#: 19876628 • Tattoo: 024

#CTS Remedy 1T01

SIRE. Ellingson Homegrown 6035

EA Blanche 4137

B Bar Joe Hero 2774

DAM. RTA Kenna 8009

RTA Kenna 698

#Connealy Thunder
CTS 7V03 Bellemere Maid 9T02
Ellingson Format 2205
#EA Blanche 1137

RA Joe Hero
B Bar Miss Wix 277
#Soo Line Motive 9016
RTA Blockbuster 479

Act. BW	BW Ratio	Adj. WW	WW Ratio	CED	BW	WW	YW	Milk
78	99	768	109	9	-1.0	56	103	28

This Homegrown son is a performance machine. He hit the ground at 78 pounds and has not looked back. During a 30 day feed test in October, he had an actual gain of 7 pounds per day! Just imagine how fast this guy will pay for himself if his steer calves gain like he does. He should sire daughters that are eye appealing and productive. His grandam was the youngest cow to make it in to our donor program. His dam is off to a great start.

Suitable for heifers / Dam's Production: WR 1-109



Sons of
S CHISUM 255



Chisum 255 is a structurally sound sire who breeds daughters that are feminine with excellent udders.

S CHISUM 255 / SIRE LOTS 54-57

» **LOT 54** «

RTA **TWITTY 05**

BD: 2/10/20 • AAA#: 19876611 • Tattoo: 005

SIRE: **S Chisum 255**

#S Blossom 0278

M Diamond Alliance 780

DAM: **RTA Pride 200**

BDA Pride 5061

S Alliance 3313

#S Gloria 464

#Shipwheel Chinook

#S Blossom 8378

#Sitz Alliance 6595

M Diamond Dutchess 528

#R P Bushwacker 3 944

BDA Datelines Pride 3038

Act. BW	BW Ratio	Adj. WW	WW Ratio	CED	BW	WW	YW	Milk
95	112	744	105	8	1.2	56	92	20

This powerful Chisum son will add pounds to your calf crop. He has a breathtaking profile and will stamp out one of a kind progeny that will have a positive impact on anyones operation.

Dam's Production: WR 7-99

» **LOT 55** «

RTA **CHISUM 015**

BD: 2/11/20 • AAA#: 19895170 • Tattoo: 015 • Twin

SIRE: **S Chisum 255**

#S Blossom 0278

#Soo Line Motive 9016

DAM: **RTA Lass 353**

RTA Lass 137

S Alliance 3313

#S Gloria 464

#Shipwheel Chinook

#S Blossom 8378

HF Kodiak 5R

TLA Beauty 5R

#K C F Bennett Total

BDA Lass EL 3054

Act. BW	BW Ratio	Adj. WW	WW Ratio	CED	BW	WW	YW	Milk
72	92	713	101	11	-0.4	47	78	20

Suitable for heifers / Dam's Production: WR 5-97



» LOT 56 «

RTA **CAMPBELL** 036

BD: 2/17/20 • AAA#: 19876608 • Tattoo: 036

SIRE. S Chisum 255
 #S Chisum 6175
 #S Blossom 0278

DAM. RTA Eily 403
 RTA Eily 029

S Alliance 3313
 #S Gloria 464
 #Shipwheel Chinook
 #S Blossom 8378

#Connealy Consensus 7229
 #Connealy Consensus
 Blue Lilly of Conanga 16
 HF Worth It All 805
 BDA Elluna 5000

Act. BW	BW Ratio	Adj. WW	WW Ratio	CED	BW	WW	YW	Milk
74	85	660	94	14	-1.4	45	73	20

Suitable for heifers / Dam's Production: WR 5-98

» LOT 57 «

RTA **CHISUM** 045

BD: 2/13/20 • AAA#: 19876612 • Tattoo: 045

SIRE. S Chisum 255
 #S Chisum 6175
 #S Blossom 0278

DAM. RTA Lucies Right Time 101
 RTA Lucies Right Time 900

S Alliance 3313
 #S Gloria 464
 #Shipwheel Chinook
 #S Blossom 8378

Crook Mt Hero 59
 CAR Hero 704
 Revolution 165 of Crook MT
 Nitz Right Time 6557
 BDA Lucies Design 5024

Act. BW	BW Ratio	Adj. WW	WW Ratio	CED	BW	WW	YW	Milk
95	109	741	105	6	2.0	53	84	22

Dam's Production: WR 8-99



In vivo-produced embryos. Photo by Nicky Oosthuizen. Published by Progressive Cattle, 24 February 2020.

IN VITRO FERTILIZATION AND EMBRYO TRANSFERS

Rafter T Angus utilizes embryo transfer to provide its customers with superior genetics.

Information curated by Drs. Jay and Brandi Hudson, Lazy H Large Animal Services, LLC

Rafter T Angus collects oocytes from their superior females and fertilizes them with hand-picked bull semen to give you their best genetic product possible. Instead of one bull calf from their ideal cow, they can offer you multiples of her offspring in one year. Currently, there are two methods utilized commercially for embryo production in cattle ET programs: Multiple Ovulation ET (MOET) and In vitro fertilization (IVF).

In current MOET protocols, hormones are given to the superior donor cow to cause her to superovulate. She releases multiple oocytes at ovulation which are fertilized in her uterus via AI. If successful, multiple embryos are collected and transferred into recipient (surrogate) cows.

IVF has been utilized in the industry since 1981, but has gained more ground in the last decade. With this procedure, unfertilized oocytes are aspirated directly from the donor cow's

ovaries. Advantages of IVF are the donor cow can be pregnant or even deceased at the time. More oocytes can be obtained through this process than with MOET. Collected oocytes are then fertilized and cultured in a petri-dish until ready to transfer or frozen. When using advanced technologies such as IVF, an attempt to mimic mother nature's natural growing environment can be very difficult, thus it is understood that IVF fetuses can potentially grow larger resulting in a larger birthweight themselves. This influence does not reflect the true birthweight of the calf and does not alter its offspring's genetics.

Advanced technologies allow ranchers to propagate desired genetics that have been analyzed and studied more than the average genetic pool. With these data sets, ranchers can utilize EPDs to the point of highest predictabilities.



RTA TURNING POINT 846 / SIRE OF LOT 58

» LOT 58 «

RTA **TURNING POINT** 034

BD: 3/30/20 • AAA#: 19909233 • Tattoo: 034

#HF Tiger 5T
SIRE. RTA Turning Point 846
 RTA Lily 437

#Soo Line Motive 9016
DAM. RTA Carly 658
 #RTA Carly 427

HF Kodiak 5R
 HF Echo 84R
 #S A V Resource 1441
 RTA Lily 08
 HF Kodiak 5R
 TLA Beauty 5R
 #S A V Resource 1441
 #RTA Net Worth 048

Act. BW	BW Ratio	Adj. WW	WW Ratio	CED	BW	WW	YW	Milk
92	109	772	109	4	3.0	62	114	26

Dam's Production: WR 3-108



EXAR DECLARATION 1686B / GRANDSIRE SIRE OF LOT 59

» LOT 59 «

RTA **DECLARATION** 043

BD: 4/8/20 • AAA#: 19909232 • Tattoo: 043

EXAR Declaration 1686B
SIRE. LC Declaration 1710
 #Sedgwicks Barbara Z439

RTA Motive 566
DAM. RTA Bessie 784
 RTA Bessie 280

#Rito 6EM3 of 4L1 Emblazon
 Sitz Henrietta Pride 643T
 Limestone Jupiter U449
 Sedgwicks Barbara X4391
 #Soo Line Motive 9016
 #RTA Bessie 123
 M Diamond Alliance 780
 BDA Bessie 6012

Act. BW	BW Ratio	Adj. WW	WW Ratio	CED	BW	WW	YW	Milk
76	93	704	99	7	0.7	48	85	24

Suitable for heifers / Dam's Production: WR 1-99



ENJOYING DONUTS SALE MORNING

» LOT 60 «

RTA **COLORADO** 020

BD: 3/5/20 • AAA#: 19909231 • Tattoo: 020

KMR Cash 355
SIRE. KMR Cash 848
 KMR Lady 835

Musgrave Aviator
DAM. RTA Beauty 774
 RTA Beauty 557

#Barstow Cash
 KMR Blackbird 1117
 KMR Rebel 1073
 KMR Lady 827
 #Koupals B&B Identity
 MCATL Forever Lady 1429-138
 #Barstow Cash
 RTA Beauty 337

Act. BW	BW Ratio	Adj. WW	WW Ratio	CED	BW	WW	YW	Milk
68	84	651	92	4	-0.7	47	93	26

Suitable for heifers / Dam's Production: WR 2-100



SAVE \$1,000s THIS WINTER!

Don't let rodents take over equipment, storage buildings and cattle yards.

Call us at: 307-461-9268 to schedule your **FREE** inspection to protect your ranch from damage caused by rodents.

www.pfizerpestcontrol.com

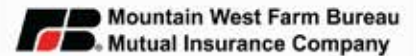


Custom Farm & Ranch coverages from the #1 provider in Wyoming & Montana

Becky Pearson, Agent

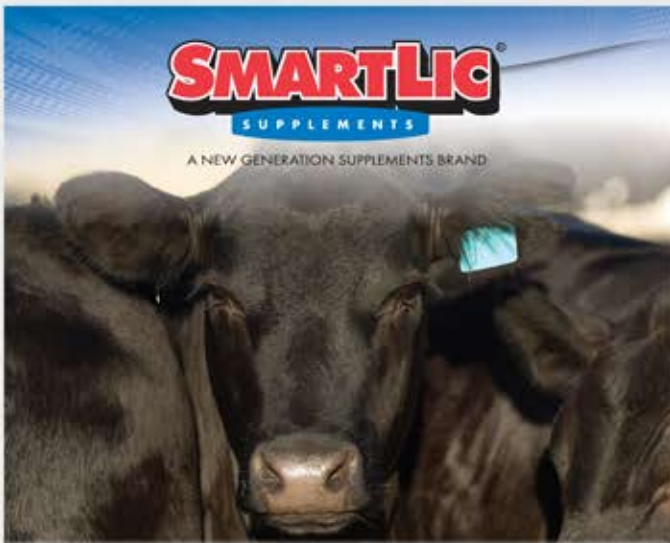
(307) 682-4454

1309 W. 2nd Street, Gillette, WY 82716



HOME | AUTO | FARM & RANCH | BUSINESS | LIFE | ANNUITIES

Property-casualty insurance products offered through Mountain West Farm Bureau Mutual Insurance Company, Laramie, WY. Life insurance and annuity products offered through Farm Bureau Life Insurance Company, West Des Moines, Iowa. *Company provider of Farm Bureau Financial Services.



SMARTLIC
SUPPLEMENTS

A NEW GENERATION SUPPLEMENTS BRAND

SmartLic® supplements were created out of the need for better, higher quality livestock nutrition supplements that would not only provide the highest nutritional value, but would also help producers minimize their supplemental feed costs.

And guess what? That's exactly what SmartLic® supplements do.



Shawn Miller

(307) 217-3217
shawnm@newgensupplements.com

smartlic.com



in Gillette Wyoming is happy to handle all your animal Health needs and carry a full line of **CHS Payback Feeds** completely Fortified for optimum performance

Better conception rates, fertility, weight gains, immunity, minerals

-- AVAILABLE WITH

AVAILA 4



Contact Ashley or Vic at
Gillette Coop 307-682-4772

OR

CHS Nutrition Consultant Doug Hogan at
605-391-5346

Complete Rations Fortified to meet your goals.

Notes

PROGRESSIVE CATTLEMEN

RELY ON VITAFERM®

DON'T FORGET ABOUT
THE OTHER HALF OF THE EQUATION

Our VitaFerm line is built to benefit more than just your cowherd.
Let our products help you get the most out of your bull battery as well.



Cheri Irvin • (307) 682-4951

VITAFERM PERFORMANCE THAT PAYS



Chopping wheat silage, July 2020

Catalog designed by
6 Generation 6
marketing
www.generation6.co



Rafter T Angus
Kim & Kale Kretschman
721 Middle Prong Road
Gillette, WY 82716

