



RAFTER T ANGUS

INAUGURAL BULL SALE

JANUARY 14, 2017 | 1:00 PM | BUFFALO, WY

TRUST



the brand built on

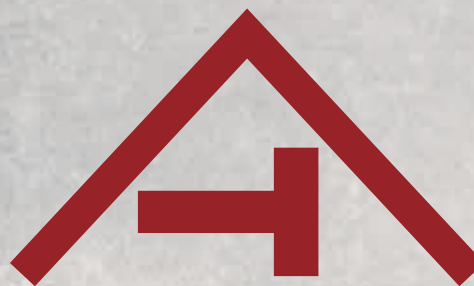
PROVEN COW FAMILIES & PERFORMANCE



RAFTER T ANGUS

INAUGURAL BULL SALE

JANUARY 14, 2017 | 1:00 PM | BUFFALO, WY
BUFFALO LIVESTOCK AUCTION



SALE DAY CONTACTS

Sale Barn 307-684-0789
Kale's cell 307-299-4569
Kim's cell 307-257-4262

SALE DAY REPRESENTATIVES

Dennis Ginkens 612-817-6101
Western Ag Reporter
Curt Cox 307-630-4604
Wyoming Livestock Roundup
Bill Pelton 406-671-5100
Bill Pelton Livestock
Scott Dirk 605-380-6024
Tri-State Livestock News

AUCTIONEER

Mark McNamee 307-760-9510

ABSENTEE BIDDING

Live internet bidding is available through CattleUSA.com or you may contact Kim and Kale Krestchman, the auctioneer or sale representatives prior to the sale.

TERMS AND CONDITIONS

Cattle will sell under the Standard Terms and Conditions as recommended by the American Angus Association.

RETAINED INTEREST

Rafter T Angus will be retaining a one-third revenue sharing interest in every bull selling in the sale. Full possession and salvage value sells on all bulls.

SUPPLEMENTAL INFORMATION

A supplement data sheet will be available sale day with scrotal measurements, ultrasound data and other updates. Announcements from the auction block take precedence over catalog information.

SALE LOCATION

Buffalo Livestock Auction
44 T W Rd
Buffalo, WY 82834

SALE DAY SCHEDULE

9:00 AM – Bulls available for viewing
12:00 AM – Free Lunch
1:00 PM – Sale Begins

LIABILITY

All persons who attend the sale do so at their own risk. Rafter T Angus and Buffalo Livestock Auction assumes no liability, legal or otherwise, for any accidents which may occur.

ACCOMMODATIONS

Hampton Inn, Buffalo 307-684-8899
Comfort Inn, Buffalo 307-684-9564

TRUCKING

Delivery of all bulls is free of charge in Wyoming and adjoining states. Delivery of bulls will begin around April 1st.

INSURANCE

Bill Pelton, Stockmens Ins. Agency 406-671-5100
We strongly encourage our buyers to purchase insurance on their bulls against death or injury. We cannot guarantee them against an act of God or sickness that develops while he is in your control. We do guarantee our cattle to be healthy sale day and when their arrive to your ranch. Bill Pelton with Stockmens Insurance Agency will be available sale day to answer any questions and set-up a policy per your request.

WINTERING

All bulls will be wintered free of charge until April 1, 2017 at our ranch in Gillette, WY. If you choose to leave your bulls past April 1st feeding arrangements can be made at the buyer's expense.

HERD HEALTH

All bulls will be tested BVD PI Negative. All cattle sell with proper health papers for interstate shipment. A rigid herd health program is followed. All cattle have been calf hood vaccinated with 7-way Somnus at branding and at weaning along with IBR, BVD, BRSV, Pasturella and a Dectomax Pour On.

FERTILITY

The bulls will be fertility tested by a licensed veterinarian prior to delivery.

FIRST BREEDING SEASON GUARANTEE

Rafter T Angus guarantees bull(s) for their first breeding season (60 days from turn out) provided the bull(s) are managed properly and are kept in acceptable nutritional and physical health. Upon delivery Rafter T Angus guarantees the bull(s) are sound and fertile. Should death or injury occur to the bull(s) it should be documented and verified by a licensed DVM. Rafter T Angus will either give credit to the buyer or replace injured bull(s) at their discretion, if a comparable bull(s) is available.

CALVING EASE RECOMMENDATION

Each bull in the sale has been assigned a calving ease score, found in the bottom right of their lot box. This is our suggestion on what each bull is best suited for based on a number of factors including pedigree, birth weight and our knowledge of the sire and dam. All buyers should take into account their own program when considering these recommendations. Please talk to us prior to the sale if you have any questions.

Greetings Cattlemen!

We are excited to cordially invite you to our first annual bull sale. Since purchasing our founding herd of Angus females in 2008 we have anticipated this event.

Recently cattle producers have seen drastic changes in our industry, especially over the past year. In our area we've endured a horrible drought and we were forced to wean our bulls early. Through this harsh test from Mother Nature grass is becoming scarce for our cows, demanding them to maintain production on a high level of efficiency. Cattle which best survive these elements are problem free, predictable from their genetic makeup and provide complete structural soundness to cover miles of rough terrain. We are fortunate to have a herd of cows handling these situations quiet well for their circumstances and we credit their success to our ruthless culling decisions each year in an effort to not pass on unwanted traits/genetics to our customers.

While the cattle industry evolves we strive to stay ahead of the curve by continuously seeking genetics that will move our herd and breed forward. We feel the best way to achieve this goal is by utilizing a strong AI program and individually mating our cows, highlighting their best traits and identifying needed improvements. Selection is based not only on cow families but also reviewing EPD data and utilizing the science to help propel our herd for years to come. We strive to produce bulls that offer genetic merit with phenotype.

Now that you know more about our program.... let's talk about the bulls! Since we weaned early this summer we have hand fed and walked through them everyday, even with our three year old son tagging along to help chore. This is a very quiet group of bulls and we're looking forward to what they will do for our customer's operations.

Our goal is to offer outstanding customer service, not only just around sale time but also when the bulls are at home working in your pastures. We represent our cattle honestly, hoping to build long term relationships with our customers. The bulls are sold with a first breeding season guarantee and will have a complete breeding soundness exam before leaving our ranch in April. If you live in Wyoming or surrounding states we will deliver your bull(s) for free, beginning April 1, 2017. If for any reason you are not fully satisfied with the bull(s) you purchase please contact us!

If you're in the area before the sale please stop by and look through the bulls and learn more about how our program can work for you. More information on the cattle and videos of all the sale bulls can be found on our website, www.raftertangus.com

We look forward to visiting with you on sale day and hope you'll join us for lunch starting at 11 AM. Thank you for placing your trust and hard earned dollars in our bulls, we truly appreciate your business.

RAFTER T ANGUS

- The Kretschman Family
Kale, Kim, Galen & Zane





LOT 1

» LOT 1 «

RTA **SCOTT** 608

BD: 02/14/16 • AAA#: 18594419 • Tattoo: 608

SIRE. **B Bar Joe Hero 2774**
 B Bar Miss Wix 277
 S A V Resource 1441

DAM. **RTA Lily 437**
 RTA Lily 08

Vermilion Nebraska L095
 R A 573 Wendy G160
 BCC Frontrunner 27K
 B Bar Miss Wix 2070
 Rito 707 of Ideal 3407 7075
 S A V Blackcap May 4136
 S A V Net Worth 4200
 BDA Pride 5061

Act. BW	BW Ratio	Adj. WW	WW Ratio	CED	BW	WW	YW	Milk
85	104	798	106	6	0.7	54	93	24

The maternal Grandmother to the lot 1 bull is our RTA Lily 08 cow. She has been an outstanding cow in our program. His dam, out of SAV Resource 1441, is showing tremendous promise. This bull should throw a very consistent calf crop loaded with maternal excellence.

Dam's Production: BR 1 104; WR 1 106

» CALVING EASE «
 ★ ★ ★

» LOT 2 «

RTA **DOUGLAS** 615

BD: 01/24/16 • AAA#: 18594394 • Tattoo: 615

SIRE. **B Bar Joe Hero 2774**
 B Bar Miss Wix 277

DAM. **RTA Eisa Evergreen 461**
 Connealy Final Product
 FA Eisa Evergreen 801

Vermilion Nebraska L095
 R A 573 Wendy G160
 BCC Frontrunner 27K
 B Bar Miss Wix 2070
 Connealy Product 568
 Ebonista of Conanga 471
 Stevenson Moneymaker R185
 Ox Bow Eisa Evergreen 869

Act. BW	BW Ratio	Adj. WW	WW Ratio	CED	BW	WW	YW	Milk
75	93	833	110	8	-0.9	56	92	25

This is by far the longest sided bull in the sale. Out of a two year old dam, this bull had the heaviest actual weaning weight in the offering. Pairing that with a 75 pound birth weight.

Dam's Production: BR 1 93; WR 1 110

» CALVING EASE «
 ★ ★ ★



LOT 2

» LOT 3 «

RTA **EASTWOOD** 630

BD: 03/05/16 • AAA#: 18596497 • Tattoo: 630

SIRE. **HF Thunderbird 146Y**
 HF Echo 187N
 Sitz Peak Legacy 9613

DAM. **RTA Beauty 106**
 RTA Beauty 938

HF Kodiak 5R
 HF Echo 84R
 TC Freedom 104
 Duralta 14C Echo 32E
 Sitz Alliance 6595
 Sitz Blackcap 2841
 B C Marathon 7022
 BDA Beauty 6084

Act. BW	BW Ratio	Adj. WW	WW Ratio	CED	BW	WW	YW	Milk
91	103	807	104	5	1.2	50	94	26

Lot 3 will be a smart buy for breeders wanting to add maternal excellence to their calves without sacrificing pounds at weaning. His dam combines the power and maternal traits from both BC Marathon and Sitz Alliance 6595. Sure to make outstanding females with longevity and performance.

Dam's Production: BR 4 105; WR 4 107

» CALVING EASE «
 ★



LOT 3



LOT 4



LOT 5



B BAR JOE HERO 2774
SIRE OF LOTS 1, 2, 4 AND 5

» LOT 4 «

RTA **DUVALL** 616

BD: 01/22/16 • AAA#: 18594392 • Tattoo: 616

SIRE: **B Bar Joe Hero 2774**
RA Joe Hero Vermilion Nebraska L095
B Bar Miss Wix 277 BCC Frontrunner 27K
Soo Line Motive 9016 HF Kodiak 5R
RTA **Betty 451** TLA Beauty 5R
RTA Betty 270 RTA Marathon 912
BDA Betty 6141

Act. BW	BW Ratio	Adj. WW	WW Ratio	CED	BW	WW	YW	Milk
77	96	799	106	9	-0.8	51	81	25

This bull is an outcross heifer bull loaded with performance. Pictures do not do this bull justice. He is big topped and structurally superb. He is powerfully built and stunning from all angles with superior soundness and herd bull authority. His calves should wean heavy, and have lots of eye appeal. His dam, a Soo Line Motive daughter has a picture perfect udder and has maintained great body condition while raising her first calf.

Dam's Production: BR 1 96; WR 1 106



UNDERSTANDING CALVING EASE SCORES

- ★★★ Definite calving ease, use on heifers
- ★★ Moderate calving ease, use on large heifers
- ★ Low calving ease, use on mature cows

» LOT 5 «

RTA **ELLIOTT** 641

BD: 01/26/16 • AAA#: 18594396 • Tattoo: 641

SIRE: **B Bar Joe Hero 2774**
RA Joe Hero Vermilion Nebraska L095
B Bar Miss Wix 277 BCC Frontrunner 27K
Connealy Consensus 7229 Connealy Consensus
BDA Travler 9935
BDA Lucy 2168 BDA Lucy 9826

Act. BW	BW Ratio	Adj. WW	WW Ratio	CED	BW	WW	YW	Milk
75	93	804	106	10	-1.3	49	80	25

Another outcross heifer bull. This bull easily sorted himself to the top of our bull crop. He is phenotypically impressive with lots of stretch and style. The maternal grandmother to this bull, BDA Lucy 2168, had seven pathfinders in her three generation pedigree. She always Al'd and was in our program for thirteen years. Combining that maternal performance and longevity with the calving ease and growth from his sire, he should sire calves that come easily and have explosive growth.

Dam's Production: BR 1 93; WR 1 106





LOT 6

» LOT 6 «

RTA **WAYNE** 634

BD: 03/11/16 • AAA#: 18596500 • Tattoo: 634

SIRE: **HF Thunderbird 146Y**
HF Tiger 5T
HF Echo 187N

HF Kodiak 5R
HF Echo 84R
TC Freedom 104
Duralta 14C Echo 32E
S A V 8180 Traveler 004
S A V May 2410
R P Bushwacker 3 944
BDA Datelines Pride 3038

DAM: **RTA Lily 08**
S A V Net Worth 4200
BDA Pride 5061

Act. BW	BW Ratio	Adj. WW	WW Ratio	CED	BW	WW	YW	Milk
91	103	849	110	5	3.0	57	102	25

Both sides of this bulls pedigree is stacked with pound makers. He is rugged in appearance and stout in design. His dam RTA Lily 08 has been one of the best cows in our program. She has nine pathfinders in her three generation pedigree. She's had 5 calves with an average calving interval of 370 days. Lot 6 is powerfully made, with an eye pleasing outline.

Dam's Production: BR 5 98; WR 5 101



DAM OF LOT 6

» LOT 7 «

RTA **ARNESS** 627

BD: 01/28/16 • AAA#: 18594395 • Tattoo: 627

SIRE: **Soo Line Motive 9016**
HF Kodiak 5R
TLA Beauty 5R

Sandy Bar Advantage 43M
Wilbar Ruby 955N
RR 7407 Rainmaker 2154
Terrlene Beauty 35F
Sitz Alliance 6595
M Diamond Dutchess 856
C A Future Direction 5321
BDA Lucy 2029

DAM: **RTA Lisa 456**
M Diamond Alliance 870
BDA Lucy 5070

Act. BW	BW Ratio	Adj. WW	WW Ratio	CED	BW	WW	YW	Milk
89	109	750	99	5	1.5	45	81	24

This young herd sire prospect has a breathtaking profile. He will stamp out one of a kind progeny that will have a positive impact on anyones operation. He is strong topped and big hipped and has been a stand out since birth.

Dam's Production: BR 1 109; WR 1 99



LOT 7

» LOT 8 «

RTA **JOE HERO** 614

BD: 02/14/16 • AAA#: 18594411 • Tattoo: 614

SIRE: RA Joe Hero Vermilion Nebraska L095
B Bar Joe Hero 2774 R A 573 Wendy G160
 B Bar Miss Wix 277 BCC Frontrunner 27K
 B Bar Miss Wix 2070
DAM: Paintrock Answer 248-377-9 Paintrock Final Answer 248-9
RTA Hedy 491 TP Lady EXT of PR 130-9
 RTA Hedy 217 PRA Tom 8119
 BDA Hedy 5067

Act. BW	BW Ratio	Adj. WW	WW Ratio	CED	BW	WW	YW	Milk
71	89	767	101	12	-2.4	47	76	26

Lot 8 is flat topped outcross heifer bull. He has a negative birth weight and a double digit CED. He stands out phenotypically and has a tremendous disposition. On the maternal side of his pedigree he is loaded with longevity. His two year old dam is showing lots of promise.
 Dam's Production: BR 1 89; WR 1 101

» CALVING EASE «
 ★ ★ ★



LOT 8



LOT 9



LOT 9 WITH DAM ON
 SUMMER PASTURE

» LOT 9 «

RTA **MARTIN** 647

BD: 03/03/16 • AAA#: 18596501 • Tattoo: 647

SIRE: HF Tiger 5T HF Kodiak 5R
HF Thunderbird 146Y HF Echo 84R
 HF Echo 187N TC Freedom 104
 Duralta 14C Echo 32E
DAM: Mytty In Focus S A F Focus of E R
RTA Bessie 8065 Mytty Countess 906
 BDA Bessie 6012 LCC New Standard
 BDA Bessie 2044

Act. BW	BW Ratio	Adj. WW	WW Ratio	CED	BW	WW	YW	Milk
91	103	850	110	8	0.9	57	101	26

One word describes this bull "Power". He is super big ribbed with lots of style. His dam is nine years old and is one of our most moderate cows. She is a Mytty In Focus daughter with picture perfect feet and an outstanding udder.

Dam's Production: BR 7 96; WR 7 99

» CALVING EASE «
 ★



LOT 10

» LOT 10 «

RTA **MCQUEEN** 639

BD: 03/03/16 • AAA#: 18594393 • Tattoo: 639

SIRE: RA Joe Hero Vermilion Nebraska L095
B Bar Joe Hero 2774 R A 573 Wendy G160
 B Bar Miss Wix 277 BCC Frontrunner 27K
 B Bar Miss Wix 2070
DAM: Sitz Peak Legacy 9613 Sitz Alliance 6595
RTA Camilla 328 Sitz Blackcap 2841
 RTA Camilla 146 RTA Marathon 912
 BDA Camilla 3068

Act. BW	BW Ratio	Adj. WW	WW Ratio	CED	BW	WW	YW	Milk
89	105	813	105	6	-0.1	46	77	26

This bull presents strong numbers in every category. His dam is nearly perfect in her structure with impeccable udder quality. He should produce calves that are very strong maternally with tremendous growth.

Dam's Production: BR 2 110; WR 2 108

» CALVING EASE «
 ★ ★



LOT 11

» **LOT 11** «

RTA **VAN CLEEF** 602

BD: 03/05/16 • AAA#: 18594397 • Tattoo: 602

SIRE: HF Kodiak 5R
Soo Line Motive 9016
 TLA Beauty 5R
 Pass Creek 616 563 7005

DAM: Sandy Bar Advantage 43M
 Wilbar Ruby 955N
 RR 7407 Rainmaker 2154
 Terrlene Beauty 35F
 Rito 616 of 4B20 6807
 Ms PCAR Rito 115 311 563
 BD Rockn Ambush 4158
 BDA Eline Lass 5182

Act. BW	BW Ratio	Adj. WW	WW Ratio	CED	BW	WW	YW	Milk
90	102	772	100	7	0.6	40	74	21

Lot 11 is moderate framed and soggy middled. A very muscular bull with the fleshing characteristics to excel in a low input environment. His strong maternal pedigree combines Soo Line Motive with one of our most productive cow families. His dam is easy fleshing with a flawless udder.

Dam's Production: BR 4 96; WR 4 98



RTA ELANE 054
 DAM OF LOT 11

» **LOT 12** «

RTA **JOE HERO** 601

BD: 03/13/16 • AAA#: 18594418 • Tattoo: 601

SIRE: RA Joe Hero
B Bar Joe Hero 2774
 B Bar Miss Wix 277
 Vermilion Nebraska L095
 R A 573 Wendy G160
 BCC Frontrunner 27K
 B Bar Miss Wix 2070

DAM: Sitz Peak Legacy 9613
RTA Black Cap 343
 RTA Black Cap 120
 Sitz Alliance 6595
 Sitz Blackcap 2841
 S A V Pioneer 7301
 RTA Black Cap 928

Act. BW	BW Ratio	Adj. WW	WW Ratio	CED	BW	WW	YW	Milk
77	91	758	98	10	-2.0	47	80	22

Dam's Production: BR 2 94; WR 2 96



B BAR JOE HERO 2774
 SIRE OF LOT 12

» **LOT 13** «

RTA **RESOURCE** 618

BD: 03/17/16 • AAA#: 18594406 • Tattoo: 618

SIRE: Rito 707 of Ideal 3407 707
S A V Resource 1441
 S A V Blackcap May 4136
 S A V 8180 Traveler 004
 S A V May 2397

DAM: S A V 8180 Traveler 004
RTA Elane 341
 RTA Elane 054
 BR Rito 707
 Ideal 3407 of 1418 076
 S A V 8180 Traveler 004
 S A V May 2397
 Sitz Traveler 8180
 Boyd Forever Lady 8003
 Pass Creek 616 563 7005
 RTA Eline 8157

Act. BW	BW Ratio	Adj. WW	WW Ratio	CED	BW	WW	YW	Milk
92	108	770	99	0	2.7	55	104	21

Dam's Production: BR 2 103; WR 2 96



S A V RESOURCE 1441
 SIRE OF LOT 13

» LOT 14 «

RTA **JOE HERO** 646

BD: 02/23/16 • AAA#: 18594410 • Tattoo: 646

SIRE: **B Bar Joe Hero 2774**
 RA Joe Hero Vermilion Nebraska L095
 B Bar Miss Wix 277 R A 573 Wendy G160
 B Bar Miss Wix 2070
 M Diamond Alliance 870 Sitz Alliance 6595
 BDA Pride 5061 R P Bushwacker 3 944
 BDA Datelines Pride 3038

Act. BW	BW Ratio	Adj. WW	WW Ratio	CED	BW	WW	YW	Milk
80	99	727	96	10	-0.9	46	77	22

Dam's Production: BR 1 99; WR 1 96



» LOT 15 «

RTA **MOTIVE** 600

BD: 01/26/16 • AAA#: 18596111 • Tattoo: 600

SIRE: **Soo Line Motive 9016**
 HF Kodiak 5R Sandy Bar Advantage 43M
 TLA Beauty 5R Wilbar Ruby 955N
 Connealy Final Product RR 7407 Rainmaker 2154
 RTA Beauty 938 Terlene Beauty 35F
 Connealy Product 568
 B C Marathon 7022
 BDA Beauty 6084

Act. BW	BW Ratio	Adj. WW	WW Ratio	CED	BW	WW	YW	Milk
90	110	668	88	1	2.8	41	77	22

Dam's Production: BR 1 110; WR 1 88



» LOT 16 «

RTA **MOTIVE** 633

BD: 03/05/16 • AAA#: 18596114 • Tattoo: 633

SIRE: **Soo Line Motive 9016**
 HF Kodiak 5R Sandy Bar Advantage 43M
 TLA Beauty 5R Wilbar Ruby 955N
 RR 7407 Rainmaker 2154
 Terrlene Beauty 35F
 S A V 8180 Traveler 004 Sitz Traveler 8180
 RTA Beauty 938 Boyd Forever Lady 8003
 B C Marathon 7022
 BDA Beauty 6084

Act. BW	BW Ratio	Adj. WW	WW Ratio	CED	BW	WW	YW	Milk
90	106	728	94	3	2.5	41	75	22

Dam's Production: BR 2 106; WR 2 93



» LOT 17 «

RTA **MOTIVE** 621

BD: 01/27/16 • AAA#: 18596112 • Tattoo: 621

SIRE: **Soo Line Motive 9016**
 HF Kodiak 5R Sandy Bar Advantage 43M
 TLA Beauty 5R Wilbar Ruby 955N
 RR 7407 Rainmaker 2154
 Terrlene Beauty 35F
 M Diamond Alliance 870 Sitz Alliance 6595
 RTA Lori 149 RTA Lori 149 M Diamond Dutchess 856
 S A V Net Worth 4200
 BDA Lori 16

Act. BW	BW Ratio	Adj. WW	WW Ratio	CED	BW	WW	YW	Milk
90	110	733	97	1	3.2	48	83	23

Dam's Production: BR 1 110; WR 1 97



» LOT 18 «

RTA **MOTIVE** 610

BD: 02/29/16 • AAA#: 18594400 • Tattoo: 610

SIRE: **Soo Line Motive 9016**
 HF Kodiak 5R Sandy Bar Advantage 43M
 TLA Beauty 5R Wilbar Ruby 955N
 RR 7407 Rainmaker 2154
 Terrlene Beauty 35F
 Pass Creek 616 563 7005 Rito 616 of 4B20 6807
 RTA Blackcap 07 Ms PCAR Rito 115 311 563
 RTA Blackcap 8102 BD Rockn Ambush 4158
 BDA Blackcap Lady 3072

Act. BW	BW Ratio	Adj. WW	WW Ratio	CED	BW	WW	YW	Milk
82	93	761	98	10	-0.9	42	75	22

Dam's Production: BR 5 100; WR 5 96



BULL FEED RATION «

Rafter T Angus Bull feed is a customized protein and nutrient dense pellet designed to develop superior frame and muscling while building strong feet and legs. The feed contains accelerated levels of vitamin and organic trace mineral fortification targeting enhanced fertility, immunity and bone/joint development in fast maturing Rafter T Bulls. Our focus is to optimize nutrition to prevent over conditioning that leads to bulls 'falling apart' on grass. The overall feeding concept at Rafter T is to grow solid performance driven bulls at peak genetic capacity and deliver them to your door ready to go to work in any conditions.

» LOT 19 «

RTA **PRESIDIO** 619

BD: 03/04/16 • AAA#: 18594401 • Tattoo: 619

SIRE: **RTA Presidio 384**
 EF Presidio 9001
 RTA Blackcap 010

DAM: **RTA Lucies Motive 118**
 Soo Line Motive 9016
 RTA Lucies Marathon 918

O C C Paxton 730P
 Akers Dixie Erica 7008
 Sitz Peak Legacy 9613
 RTA Blackcap 8008
 HF Kodiak 5R
 TLA Beauty 5R
 B C Marathon 7022
 BDA Lucy 6147

Act. BW	BW Ratio	Adj. WW	WW Ratio	CEB	BW	WW	YW	Milk
75	100	798	100	5	1.3	42	78	21

Dam's Production: BR 3 108; WR 3 101



» LOT 20 «

RTA **THUNDERBIRD** 635

BD: 03/04/16 • AAA#: 18596495 • Tattoo: 635

SIRE: **HF Thunderbird 146Y**
 HF Tiger 5T
 HF Echo 187N

DAM: **RTA Bessie 379**
 RTA Alliance 117
 RTA Bessie 135

HF Kodiak 5R
 HF Echo 84R
 TC Freedom 104
 Duralta 14C Echo 32E
 Sitz Peak Legacy 9613
 RTA Betty 8219
 HF Worth It All 805
 BDA Bessie 5059

Act. BW	BW Ratio	Adj. WW	WW Ratio	CEB	BW	WW	YW	Milk
89	105	806	104	4	2.5	53	92	27

Dam's Production: BR 2 102; WR 2 101



» LOT 21 «

RTA **JOE HERO** 617

BD: 04/25/16 • AAA#: 18594404 • Tattoo: 617

SIRE: **B Bar Joe Hero 2774**
 RA Joe Hero
 B Bar Miss Wix 277

DAM: **RTA Lady 335**
 Paintrock Answer 248-377-1
 TP Lady of Paintrock 57-1

Vermilion Nebraska L095
 R A 573 Wendy G160
 BCC Frontrunner 27K
 B Bar Miss Wix 2070
 Paintrock Final Answer 248-9
 TP Lady EXT of PR 130-9
 Connealy Thunder
 TP Lady of Paintrock 239-6

Act. BW	BW Ratio	Adj. WW	WW Ratio	CEB	BW	WW	YW	Milk
80	94	898	116	11	-1.9	54	86	27

Dam's Production: BR 2 100; WR 2 109



» LOT 22 «

RTA **THUNDERBIRD** 612

BD: 03/09/16 • AAA#: 18596492 • Tattoo: 612

SIRE: **HF Thunderbird 146Y**
 HF Tiger 5T
 HF Echo 187N

DAM: **RTA Beauty 337**
 Soo Line Motive 9016
 RTA Beauty 106

HF Kodiak 5R
 HF Echo 84R
 TC Freedom 104
 Duralta 14C Echo 32E
 HF Kodiak 5R
 TLA Beauty 5R
 Sitz Peak Legacy 9613
 RTA Beauty 938

Act. BW	BW Ratio	Adj. WW	WW Ratio	CEB	BW	WW	YW	Milk
90	106	694	90	5	2.0	45	88	24

Dam's Production: BR 2 116; WR 2 97



» LOT 23 «

RTA **JOE HERO** 631

BD: 02/28/16 • AAA#: 18594403 • Tattoo: 631

SIRE: **B Bar Joe Hero 2774**
 RA Joe Hero
 B Bar Miss Wix 277

DAM: **RTA Rose 129**
 Soo Line Kodiak 9194
 RTA Rose 8106

Vermilion Nebraska L095
 R A 573 Wendy G160
 BCC Frontrunner 27K
 B Bar Miss Wix 2070
 HF Kodiak 5R
 Soo Line Madonna 7141
 Basin Yellowstone 116P
 BDA Blackcap 4011

Act. BW	BW Ratio	Adj. WW	WW Ratio	CEB	BW	WW	YW	Milk
89	101	785	101	8	0.9	50	80	21

Dam's Production: BR 4 103; WR 4 98



LOT 23 WITH DAM
ON SUMMER PASTURE

» LOT 24 «

GGK **ICON** 68

BD: 03/11/16 • AAA#: 18607639 • Tattoo: 68

SIRE: **H A R B Icon 019**
 S A V Final Answer 0035 Sitz Traveler 8180
 S A V Emulous 8145
 H A R B Belle Nellie 702-707 H A R B Windy 702 JH
 H A R B Belle L Nellie 236
 DAM: **RTA Lady 20**
 Sitz Peak Legacy 9613 Sitz Alliance 6595
 S A V Net Worth 4200 Sitz Blackcap 2841
 Willekes Lady 112 Willekes Lady of 4402

Act. BW	BW Ratio	Adj. WW	WW Ratio	CED	BW	WW	YW	Milk
92	106	774	100	4	1.8	57	103	25

Dam's Production: BR 2 109; WR 2 102

» CALVING EASE «
★



H A R B Icon 019
SIRE OF LOT 24

» LOT 25 «

RTA **MOTIVE** 637

BD: 03/18/16 • AAA#: 18594402 • Tattoo: 637

SIRE: **KA Motive 356**
 Soo Line Motive 9016 HF Kodiak 5R
 TLA Beauty 5R
 KA Canyon Betty 927 Pass Creek 9022 936 6210
 BDA Betty 5137
 DAM: **RTA Bessie 123**
 S A V Net Worth 4200 S A V 8180 Traveler 004
 S A V May 2410
 Mytty In Focus
 BDA Bessie 6012

Act. BW	BW Ratio	Adj. WW	WW Ratio	CED	BW	WW	YW	Milk
95	108	817	105	4	2.3	50	90	26

Dam's Production: BR 4 103; WR 4 104

» CALVING EASE «
★

» LOT 26 «

RTA **MOTIVE** 648

BD: 02/29/16 • AAA#: 18596113 • Tattoo: 648

SIRE: **Soo Line Motive 9016**
 HF Kodiak 5R Sandy Bar Advantage 43M
 Wilbar Ruby 955N
 TLA Beauty 5R RR 7407 Rainmaker 2154
 Terrlene Beauty 35F
 O C C Paxton 730P
 Akers Dixie Erica 7008
 DAM: **RTA Camilla 376**
 EF Presidio 9001 TC Stockman 365
 BDA Camilla 3068 Adams Trend Camilla 958

Act. BW	BW Ratio	Adj. WW	WW Ratio	CED	BW	WW	YW	Milk
84	99	730	94	9	0.9	39	72	20

Dam's Production: BR 2 96; WR 2 93

» CALVING EASE «
★★

» LOT 27 «

RTA **CAPTAIN MORGAN** 622

BD: 03/24/16 • AAA#: 18607032 • Tattoo: 622

SIRE: **RTA Captain Morgan 40**
 Hoover Dam SydGen C C & 7
 Erica of Ellston C124
 Mc Bandolina 3Z Mc 349M Design 21T
 G Bar H Miss Bandolina 051
 DAM: **RTA Evie 249**
 Sitz Peak Legacy 9613 Sitz Alliance 6595
 Sitz Blackcap 2841
 PRA Tom 8119
 RTA Bonny 8122

Act. BW	BW Ratio	Adj. WW	WW Ratio	CED	BW	WW	YW	Milk
88	101	739	95	7	-1.3	40	76	26

Dam's Production: BR 3 100; WR 3 100

» CALVING EASE «
★★



RTA EVIE 249
DAM OF LOT 27

FROM OUR VETERINARIAN TEAM «

It has been a pleasure working with Rafter T Angus these past 8 years. Kale and Kim take great pride in producing quality cattle. Rafter T Angus guarantees their bulls and tests their quality by expecting each bull to meet the highest fertility standards set forth by the Society of Theriogenology. We can attest to their integrity and appreciate the dedication they have to bettering their industry and doing everything they can to protect their customers. We are honored to be part of their program!

Drs. Jay and Brandi Hudson
 Lazy H Large Animal Services, LLC

» LOT 28 «

RTA **MOTIVE** 643

BD: 03/02/16 • AAA#: 18607640 • Tattoo: 643

SIRE: **Soo Line Motive 9016**
 HF Kodiak 5R
 Sandy Bar Advantage 43M
 Wilbar Ruby 955N
 TLA Beauty 5R
 RR 7407 Rainmaker 2154
 Terrlene Beauty 35F
 M Diamond Alliance 780
 Sitz Alliance 6595
 M Diamond Dutchess 528
 R P Bushwacker 3 944
 BDA Datelines Pride 3038

Act. BW	BW Ratio	Adj. WW	WW Ratio	CED	BW	WW	YW	Milk
80	92	715	92	11	-0.9	42	75	21

Dam's Production: BR 3 93; WR 3 96



» LOT 29 «

RTA **THUNDERBIRD** 626

BD: 03/09/16 • AAA#: 18596499 • Tattoo: 626

SIRE: **HF Thunderbird 146Y**
 HF Tiger 5T
 HF Kodiak 5R
 HF Echo 84R
 HF Echo 187N
 TC Freedom 104
 Duralta 14C Echo 32E
 Sitz Peak Legacy 9613
 Sitz Alliance 6595
 Sitz Blackcap 2841
 Sitz Rainmaker 6169
 RTA Betty 8219
 Adams Piere Betty 9332

Act. BW	BW Ratio	Adj. WW	WW Ratio	CED	BW	WW	YW	Milk
86	98	758	98	7	0.8	48	87	25

Dam's Production: BR 5 99; WR 5 101



» LOT 30 «

RTA **JOE HERO** 604

BD: 02/14/16 • AAA#: 18594409 • Tattoo: 604

SIRE: **B Bar Joe Hero 2774**
 RA Joe Hero
 Vermilion Nebraska L095
 R A 573 Wendy G160
 B Bar Miss Wix 277
 BCC Frontrunner 27K
 B Bar Miss Wix 2070
 S A V Resource 1441
 Rito 707 of Ideal 3407 7075
 S A V Blackcap May 4136
 Sitz Peak Legacy 9613
 RTA Betty 8219

Act. BW	BW Ratio	Adj. WW	WW Ratio	CED	BW	WW	YW	Milk
86	106	740	98	5	0.6	49	86	23

Dam's Production: BR 1 106; WR 1 98



» LOT 31 «

RTA **PRESIDIO** 607

BD: 02/27/16 • AAA#: 18594405 • Tattoo: 607

SIRE: **RTA Presidio 384**
 EF Presidio 9001
 O C C Paxton 730P
 Akers Dixie Erica 7008
 RTA Blackcap 010
 Sitz Peak Legacy 9613
 RTA Blackcap 8008
 S A V Net Worth 8954
 S A V Net Worth 4200
 CHAMPION HILL Georgina 2175
 BDA Travler 9935
 BDA Lucy 1056

Act. BW	BW Ratio	Adj. WW	WW Ratio	CED	BW	WW	YW	Milk
89	105	740	95	4	1.9	37	73	21

Dam's Production: BR 2 105; WR 2 99



» LOT 32 «

GGK **CAPTAIN MORGAN** 67

BD: 05/01/16 • AAA#: 18594416 • Tattoo: 67

SIRE: **RTA Captain Morgan 40**
 Hoover Dam
 SydGen C C & 7
 Erica of Ellston C124
 Mc Bandolina 3Z
 Mc 349M Design 21T
 G Bar H Miss Bandolina 051
 S A V Net Worth 4200
 S A V 8180 Traveler 004
 S A V May 2410
 BR Midland
 Willekes Lady of 410

Act. BW	BW Ratio	Adj. WW	WW Ratio	CED	BW	WW	YW	Milk
74				6	0.9	50	90	25

Dam's Production: BR 4 104; WR 4 99



RTA **CAPTAIN MORGAN 40**
 SIRE OF LOT 32

» LOT 33 «

RTA **THUNDERBIRD** 603

BD: 02/29/16 • AAA#: 18596502 • Tattoo: 603

SIRE: **HF Thunderbird 146Y**
 HF Tiger 5T
 HF Echo 187N

DAM: **RTA Traveler 906**
 Nitz Right Time 6557
 BDA Elban 2049

HF Kodiak 5R
 HF Echo 84R
 TC Freedom 104
 Duralta 14C Echo 32E
 Leachman Right Time
 FSHK Miss Wix 511
 Gardens Prime Time
 BDA Elban 0055

Act. BW	BW Ratio	Adj. WW	WW Ratio	CED	BW	WW	YW	Milk
74	84	723	93	10	-0.2	38	71	26

Dam's Production: BR 6 96; WR 6 101



» LOT 34 «

RTA **JOE HERO** 642

BD: 01/05/16 • AAA#: 18594417 • Tattoo: 642

SIRE: **B Bar Joe Hero 2774**
 RA Joe Hero
 B Bar Miss Wix 277

DAM: **RTA Design 407**
 Soo Line Kodiak 1049
 RTA Design 8072

Vermilion Nebraska L095
 R A 573 Wendy G160
 BCC Fronrunner 27K
 B Bar Miss Wix 2070
 HF Kodiak 5R
 Soo Line Queen 8469
 Bon View New Design 1407
 BDA Betty 6141

Act. BW	BW Ratio	Adj. WW	WW Ratio	CED	BW	WW	YW	Milk
76	94	674	89	10	-0.3	42	71	21

Dam's Production: BR 1 94; WR 1 89



» LOT 35 «

RTA **MOTIVE** 645

BD: 04/01/16 • AAA#: 18594399 • Tattoo: 645

SIRE: **KA Motive 356**
 Soo Line Motive 9016
 KA Canyon Betty 927

DAM: **RTA Net Worth 06**
 S A V Net Worth 4200
 BDA Lucy 5070

HF Kodiak 5R
 TLA Beauty 5R
 Pass Creek 9022 936 6210
 BDA Betty 5137
 S A V 8180 Traveler 004
 S A V May 2410
 C A Future Direction 5321
 BDA Lucy 2029

Act. BW	BW Ratio	Adj. WW	WW Ratio	CED	BW	WW	YW	Milk
98	111	844	109	1	3.5	49	88	26

Dam's Production: BR 5 94; WR 5 106



» LOT 36 «

RTA **THUNDERBIRD** 613

BD: 03/12/16 • AAA#: 18596496 • Tattoo: 613

SIRE: **HF Thunderbird 146Y**
 HF Tiger 5T
 HF Echo 187N

DAM: **RTA Total Beauty 317**
 Paintrock Answer 248-377-1
 RTA Total Beauty 947

HF Kodiak 5R
 HF Echo 84R
 TC Freedom 104
 Duralta 14C Echo 32E
 Paintrock Final Answer 248-9
 TP Lady EXT of PR 130-9
 K C F Bennett Total
 BDA Dutches 2006

Act. BW	BW Ratio	Adj. WW	WW Ratio	CED	BW	WW	YW	Milk
90	106	776	100	6	1.7	50	90	26

Dam's Production: BR 2 104; WR 2 100



» LOT 37 «

RTA **CAPTAIN MORGAN** 629

BD: 03/24/16 • AAA#: 18607031 • Tattoo: 629

SIRE: **RTA Captain Morgan 40**
 Hoover Dam
 Mc Bandolina 3Z

DAM: **RTA Total Pride 949**
 K C F Bennett Total
 BDA Pride 2042

SydGen C C & 7
 Erica of Ellston C124
 Mc 349M Design 21T
 G Bar H Miss Bandolina 051
 Sitz Alliance 6595
 Ext of Conanga 6790
 VDAR Emulation 207
 Adams Traveler Pride 675

Act. BW	BW Ratio	Adj. WW	WW Ratio	CED	BW	WW	YW	Milk
74	84	709	91	11	-2.6	34	64	24

Dam's Production: BR 6 93; WR 6 96



» LOT 38 «

RTA **THUNDERBIRD** 620

BD: 03/05/16 • AAA#: 18596498 • Tattoo: 620

SIRE: **HF Thunderbird 146Y**
 HF Tiger 5T
 HF Echo 187N

DAM: **RTA Eva 066**
 HF Kodiak 5R
 HF Echo 84R
 TC Freedom 104
 Duralta 14C Echo 32E
 Sitz Peak Legacy 9613
 Sitz Alliance 6595
 Sitz Blackcap 2841
 Mytty In Focus
 BDA Lass 2117
 RTA Eva 8151

Act. BW	BW Ratio	Adj. WW	WW Ratio	CED	BW	WW	YW	Milk
97	110	846	109	4	1.7	54	98	25

Dam's Production: BR 5 99; WR 5 103

» CALVING EASE «
★



HF THUNDERBIRD 146Y
SIRE OF LOT 38



BDA HEDY 5067
12 YEAR OLD DAM OF LOT 39

» LOT 39 «

RTA **MOTIVE** 609

BD: 03/26/16 • AAA#: 18594412 • Tattoo: 609

SIRE: **KA Motive 356**
 Soo Line Motive 9016
 KA Canyon Betty 927

DAM: **BDA Hedy 5067**
 HF Kodiak 5R
 TLA Beauty 5R
 Pass Creek 9022 936 6210
 BDA Betty 5137
 Bon View Bando 1394
 BDA Lori 16
 VDAR Emulation 207
 Adams Ice Hedy 7118
 BDA Bando 2103
 BDA Hedy 2073

Act. BW	BW Ratio	Adj. WW	WW Ratio	CED	BW	WW	YW	Milk
91	105	786	101	4	1.4	44	75	24

Dam's Production: BR 9 104; WR 9 104

» CALVING EASE «
★



CONNEALY LEAD ON
SIRE OF LOT 40

» LOT 40 «

GGK 69

BD: 02/29/16 • COMMERCIAL BULL • Tattoo: 69

SIRE: **Connealy Lead On**
 Connealy Leadtime
 Eligence Plus of Conanga

DAM: **GGK Blackbird 10**
 Connealy Dateline
 Ruths Rona of Conanga
 TC Dividend 963
 Eura Cap of Conanga
 HF Kodiak 5R
 TLA Beauty 5R
 Waimata E230
 S A V Blackbird 5297
 Soo Line Motive 9016
 S A V Blackbird 9649

Act. BW	BW Ratio	Adj. WW	WW Ratio	CED	BW	WW	YW	Milk
72	91	746	96					

Dam's Production: BR 3 105; WR 3 106

» CALVING EASE «
★★

» LOT 41 «

RTA **MOTIVE** 611

BD: 03/31/16 • AAA#: 18594415 • Tattoo: 611

SIRE: **KA Motive 356**
 Soo Line Motive 9016
 KA Canyon Betty 927
 EXAR 263C

DAM: **Whitson's BlockBuster 263C**
 Whitson's KG Blockbuster
 HF Kodiak 5R
 TLA Beauty 5R
 Pass Creek 9022 936 6210
 BDA Betty 5137
 Bon View New Design 1407
 Exar June C 3577
 M A R Excel 1773
 Queen of Paintrock 2502

Act. BW	BW Ratio	Adj. WW	WW Ratio	CED	BW	WW	YW	Milk
87	99	775	100	7	0.4	44	78	26

Dam's Production: BR 4 97; WR 4 101

» CALVING EASE «
★

» LOT 42 «

RTA **ULTIMATE ANSWER** 638

BD: 03/03/16 • AAA#: 18596249 • Tattoo: 638

SIRE: **OCC Ultimate Answer 118**
 S A V Final Answer 0035
 OCC Montana Dream 809

DAM: **RTA Eline Lass 321**
 BDA Eline Lass 5182

Sitz Traveler 8180
 S A V Emulous 8145
 Sitz Upward 307R
 OCC Montana Dream 526
 Sitz Traveler 8180
 Boyd Forever Lady 8003
 BDA Rito 2071
 BDA Eline Lass 9738

Act. BW	BW Ratio	Adj. WW	WW Ratio	CED	BW	WW	YW	Milk
86	101	739	95	6	0.9	48	87	31

Dam's Production: BR 2 103; WR 2 101

» CALVING EASE «
★★

» LOT 43 «

RTA **CAPTAIN MORGAN** 625

BD: 03/27/16 • AAA#: 18607030 • Tattoo: 625

SIRE: **RTA Captain Morgan 40**
 Hoover Dam
 Mc Bandolina 3Z

DAM: **RTA Evie 055**
 RTA Bonny 8122

SydGen C C & 7
 Erica of Ellston C124
 Mc 349M Design 21T
 G Bar H Miss Bandolina 051
 Paintrock Alliance 62-3
 P R A Ethelda 90 S S 930
 Mytty In Focus
 BDA Bonny Rose 4052

Act. BW	BW Ratio	Adj. WW	WW Ratio	CED	BW	WW	YW	Milk
76	86	773	100	11	-2.6	43	77	28

Dam's Production: BR 5 94; WR 5 100

» CALVING EASE «
★★★

» LOT 44 «

RTA **JOE HERO** 644

BD: 03/06/16 • AAA#: 18594407 • Tattoo: 644

SIRE: **B Bar Joe Hero 2774**
 RA Joe Hero
 B Bar Miss Wix 277

DAM: **RTA Eva 351**
 RTA Eva 066

Vermilion Nebraska L095
 R A 573 Wendy G160
 BCC Frontrunner 27K
 B Bar Miss Wix 2070
 Paintrock Final Answer 248-9
 TP Lady EXT of PR 130-9
 Sitz Peak Legacy 9613
 RTA Eva 8151

Act. BW	BW Ratio	Adj. WW	WW Ratio	CED	BW	WW	YW	Milk
76	90	699	90	12	-2.4	41	72	22

Dam's Production: BR 2 93; WR 2 91

» CALVING EASE «
★★★

THE RAFTER T GUARANTEE

When you own livestock, we all know that every now and then, problems can and will arise. We had an issue in 2015 and would like to thank Kale and Kim for standing behind their commitment to raising quality animals and professional customer service and providing an excellent solution to meet our needs.

Randall & Shondah Otwell
 Lazy RS Ranch



B BAR JOE HERO 2774
 SIRE OF LOT 12

» LOT 45 «

RTA **CAPTAIN MORGAN** 632

BD: 03/21/16 • AAA#: 18607033 • Tattoo: 632

SIRE. **RTA Captain Morgan 40**
 Hoover Dam
 Mc Bandolina 3Z

DAM. **Willekes Lady of 4K**
 Garret's Nationwide 8001
 Willekes Lady of 4402

SydGen C C & 7
 Erica of Ellston C124
 Mc 349M Design 21T
 G Bar H Miss Bandolina 051
 O C C Emblazon 854E
 Boyd Forever Lady 8003
 BR Midland
 Willekes Lady of 410

Act. BW	BW Ratio	Adj. WW	WW Ratio	CED	BW	WW	YW	Milk
82	93	688	89	7	0.0	42	78	19

Dam's Production: BR 4 96; WR 4 91

» CALVING EASE «
★

» LOT 47 «

RTA **PRESIDIO** 628

BD: 03/03/16 • AAA#: 18594413 • Tattoo: 628

SIRE. **RTA Presidio 384**
 EF Presidio 9001
 RTA Blackcap 010

DAM. **RTA Beauty 938**
 B C Marathon 7022
 BDA Beauty 6084

O C C Paxton 730P
 Akers Dixie Erica 7008
 Sitz Peak Legacy 9613
 RTA Blackcap 8008
 O C C Kirby 633K
 Gibbet Hill Mignonne E37
 Connealy Lead On
 BDA Beauty 2014

Act. BW	BW Ratio	Adj. WW	WW Ratio	CED	BW	WW	YW	Milk
102	116	809	104	-2	3.0	41	76	21

Dam's Production: BR 6 110; WR 6 104

» CALVING EASE «
★

» LOT 46 «

RTA **PRESIDIO** 605

BD: 03/15/16 • AAA#: 18594414 • Tattoo: 605

SIRE. **RTA Presidio 384**
 EF Presidio 9001
 RTA Blackcap 010

DAM. **CD Mamere N31**
 TC Stockman 2164
 C A Mamere C61

O C C Paxton 730P
 Akers Dixie Erica 7008
 Sitz Peak Legacy 9613
 RTA Blackcap 8008
 TC Stockman
 TC Ruby 5087
 Vermilion Driver 2478
 Vermilion Mamere 2302

Act. BW	BW Ratio	Adj. WW	WW Ratio	CED	BW	WW	YW	Milk
88	101	779	101	3	1.6	38	71	20

Dam's Production: BR 12 109; WR 12 100

» CALVING EASE «
★



CA

CLARK & ASSOCIATES
LAND BROKERS, LLC

MARK MCNAMEE
OWNER/BROKER, AUCTIONEER

C. 307.760.9510 | O. 307.467.5523
mcnamee@clarklandbrokers.com
www.clarklandbrokers.com

RANCHES | FARMS | RECREATION | INVESTMENTS

GOT CATTLE?

We would like to save you money on
your vaccination needs!

**GREAT PRICES
GREAT SERVICES**
Shipped to your doorstep

**866-438-7541
605-347-0066**

D

e

T

y

e

DETTE VET SUPPLY, INC



WHY HUBBARD FOR ANIMAL NUTRITION?

**IT'S THE PEOPLE.
IT'S THE SERVICE.
IT'S YOUR CATTLE.
IT'S YOUR SUCCESS.**

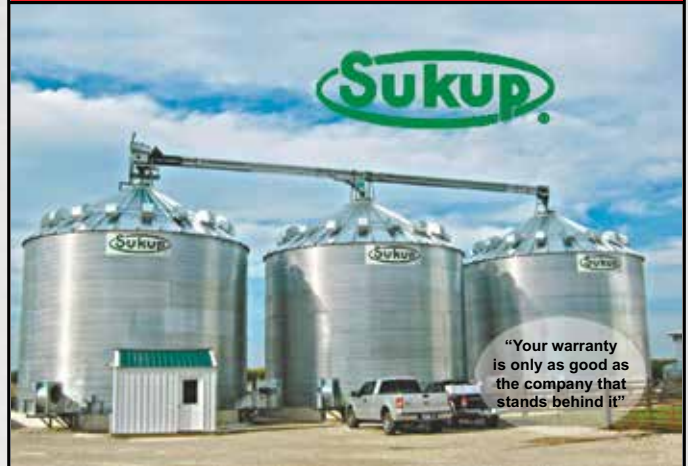
Contact a Hubbard Feeds Representative:

Tyler Melroe – Britton, SD: (605) 237-8431
Rob Zelinsky – Brookings, SD: (605) 354-8248
Terrill Weston – Lander, WY: (307) 212-0157
Russ Well – Jamestown, ND: (701) 799-7754
Tom Heilman – Pierre, SD: (605) 295-2851
Aaron Galbreath – Steele, ND: (701) 595-6004
Wes Westphal – Rapid City, SD: (605) 391-4144
Rob Pischel – O'Neill, NE: (402) 394-7200

WWW.HUBBARDFEEDS.COM

WINTER DISCOUNTS!

**Take Advantage NOW
to Get On The Schedule!**



CALL FOR ALL YOUR
GRAIN HANDLING NEEDS

307-257-3884

james@jpgrainbins.com

J&P Grain Solutions

RANCH WISE



Resources for Living in the Country

Tanya Daniels, MS, TSP
406-855-5694
tanya@ranchwise.com

Todd Daniels, MS, PAS
406-426-8090
todd@ranchwise.com



Technical Service Provider for NRCS Programs
CSP & EQUIP Contract Management
Weed Control | Animal Nutrition
Grazing Plans & Range Monitoring

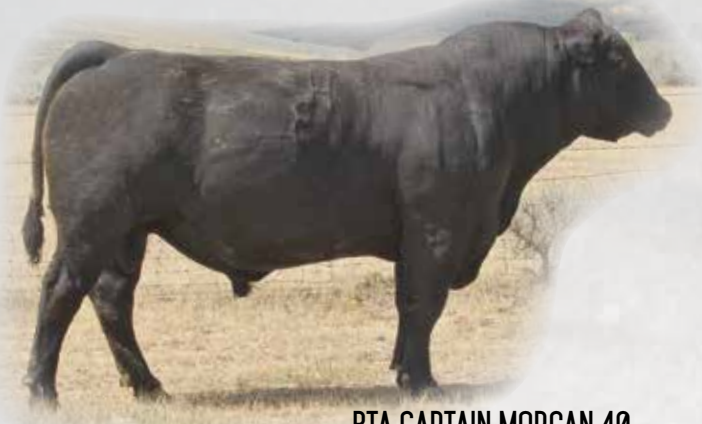
D/S TRUCKING LLC

FOR ALL YOUR HAULING & DIRT WORK NEEDS



DALE & SHERRY WOOD

307-756-3390 | 307-756-2391



RTA CAPTAIN MORGAN 40

RTA **CAPTAIN MORGAN** 40

BD: 02/10/14 • AAA#: 17915796

CED	BW	WW	YW	Milk
7	-1.5	48	87	27



H A R B ICON 019

H A R B **ICON** 019

BD: 02/10/09 • AAA#: 16526684

CED	BW	WW	YW	Milk
4	1.8	69	119	28

Cattlemen admire his progeny for their robust, deep ribbed, thick performance profile, and this Final Answer son was the \$18,000 third high-selling bull in the 2010 Midland Bull Test Station.



B BAR JOE HERO 2774

B Bar **JOE HERO** 2774

BD: 02/14/14 • AAA#: 17819418

CED	BW	WW	YW	Milk
10	-1.4	49	77	24

We bought this outcross herd sire from Lunds B Bar Angus. His sons have excelled in every facet of the growth process by coming easy and growing fast. He is producing calves out of our first calf heifers that wean as heavy or heavier than our mature cows. These calves are long and thick with an incredibly easy going disposition.



CONNELLY LEAD ON

Connealy **LEAD ON**

BD: 04/13/99 • AAA#: 13447282

CED	BW	WW	YW	Milk
1	1.8	46	88	30

REFERNCE SIRES

Soo Line **MOTIVE** 9016

BD: 01/07/09 • AAA#: 16568189

CED	BW	WW	YW	Milk
10	0.2	47	83	24

Motive is proving to be one of the leading outcross, low birth and strong phenotype bulls in the industry and his progeny are proving to be remarkably consistent.

KA **MOTIVE** 356

BD: 03/12/13 • AAA#: 17714247

CED	BW	WW	YW	Milk
7	0.6	45	80	25

RTA **PRESIDIO** 384

BD: 03/01/13 • AAA#: 17640633

CED	BW	WW	YW	Milk
9	-1.1	41	83	20

S A V **RESOURCE** 1441

BD: 01/07/11 • AAA#: 17016597

CED	BW	WW	YW	Milk
-4	3.6	70	132	23

Resource has gained the admiration of cattlemen worldwide as a sire of body mass, efficient conversion and phenotypic power like few sires the breed has ever seen. As impressive as his sons are, Resource's greatest attribute is likely his daughters.

HF **THUNDERBIRD** 146Y

BD: 01/20/11 • AAA#: 17977510

CED	BW	WW	YW	Milk
5	2.8	58	107	28

Thunderbird is more than a show bull, his calves are outstanding. He passes on superb muscle shape, bone, hair and quiet disposition. His first 12 sons were well received averaging over \$5,000 a head.

OCC **ULTIMATE ANSWER** 118

BD: 02/15/11 • AAA#: 17005549

CED	BW	WW	YW	Milk
11	-1.3	67	115	38

Ultimate Answer is a fault-free, problem-free bull in the truest sense of the word. He sires low birth weight cattle with explosive early growth, tremendous scrotal circumference, uncanny volume, capacity and gainability.



SOO LINE MOTIVE 9016



S A V RESOURCE 1441



HF THUNDERBIRD 146Y

NOTES

Catalog designed by



Generation 6
marketing

Emily Brinkman, owner/designer
419.967.0141 | www.generation6.co



Rafter T Angus
Kim & Kale Kretschman
721 Middle Prong Road
Gillette, WY 82716

